

**SAMSUNG**  
wiSeNET

# **NETWORK VIDEO RECORDER**

## User Manual

SNK-D85121BF

CE

# Overview of NVR

---

## CONTENTS

---

<b>OVERVIEW OF NVR</b>	2	Contents
	3	Safety Instruction
<b>2</b>		
<b>GET CLOSE TO NVR</b>	4	Front Panel
	5	Back Panel
	6	Remote Controller
	7	Install Hard Drive
	8	Connect external equipment
	8	Connect Camera
	9	Connect NVR
	9	How to assemble the waterproof RJ-45 coupler
	11	Cable Protection
	11	Installing the camera
<b>4</b>		
<b>NVR BOOT UP</b>	12	System Initialization
	12	Startup Wizard
	15	Main Interface
<b>12</b>		
<b>NVR MENU</b>	16	Popup Menu
	17	Main Menu Guide
	18	Main Menu
	35	Menu Lock
	36	Split Mode
	36	Stream Switch
	36	View Image Quality
	36	Record Search
	36	Start Sequence
<b>16</b>		
<b>WEB APPLICATION MANAGER</b>	37	Download and Installation of Plugin
	40	Web Application Manager Login
	40	Live Interface
<b>37</b>		
<b>MOBILE APP</b>	51	Android Phones/Tablets
	52	iPhone/iPad
<b>51</b>		
<b>APPENDIX</b>	53	Troubleshooting
	55	Specifications
	58	Dimension
<b>53</b>		

## SAFETY INSTRUCTION

Please carefully read the following safety instruction so as to avoid personal injuries and prevent the equipment and other connection devices from being damaged.

1. Please use the power supply enclosed or specified by the manufacturer.  
Never operate the equipment by using unspecified power supply.
2. Never push objects of any kind through openings of NVR so as to avoid electric shock or other accidents.
3. Do not put the equipment in a dusty location.
4. Do not place the equipment under the rain or humid environment like the basement.  
If the equipment is accidentally in contact with water, please unplug the power cable and immediately contact technical support.
5. Keep the surface of the equipment clean and dry.  
Use a soft damp cloth to clean the outer case of the NVR. (Do not use liquid aerosol cleaners.)
6. Do not operate if any problems are found.  
If there is a strange smell or sound from the NVR, unplug the power cable and contact technical support.
7. Do not try to remove the NVR cover to avoid electric shock.
8. Handle with care.  
If NVR does not work properly, please contact technical support for repair or replacement.
9. Install and place the equipment in a well ventilated area. The NVR system includes a HDD, which produces large amount of heat during operation. As a result, do not block the ventilation vents (on the top, bottom, sides and the back of the NVR).
10. Do not install near any heat sources such as radiator, stove, and other machinery or devices (including speakers) that produce large amount of heat.
11. If the provided plug does not fit your outlet, please technical support for assistance.
12. Protect the power cord from being walked on or pinched particularly at the plug level and each ends of the cord.
13. Only use attachments/accessories specified by the manufacturer.
14. Only use the cart, stand, tripod, bracket, or table specified by the manufacturer, or sold with the system.  
When a cart is used, use caution when moving the cart and the device to avoid injury from tip-over.
15. Unplug the device during lightning storms or when unused for long periods of time.
16. Refer all servicing to qualified service personnel. Servicing is required when the device has been damaged in any way, such as power-supply cord or plug is broken, liquid has been spilled or objects have fallen onto the device, exposed to rain or moisture, does not operate normally, or has been dropped.



## Standards Approvals



- ! ■ Any changes or modifications in construction of this device which are not expressly approved by the party responsible for compliance could void the user's authority to operate the equipment.
- Ⓜ ■ This device complies with part 15 of the FCC Rules. Operation is subject to the following two conditions: (1) This device may not cause harmful interference, and (2) this device must accept any interference received, including interference that may cause undesired operation.
  - This equipment has been tested and found to comply with the limits for a Class A digital device, pursuant to part 15 of the FCC Rules. These limits are designed to provide reasonable protection against harmful interference when the equipment is operated in a commercial environment. This equipment generates, uses, and can radiate radio frequency energy and, if not installed and used in accordance with the instruction manual, may cause harmful interference to radio communications. Operation of this equipment in a residential area is likely to cause harmful interference in which case the user will be required to correct the interference at his own expense.

### Caution

- Connect the power cord into a grounded outlet.
- The Mains plug is used as a disconnect device and shall stay readily operable at any time.
- Batteries shall not be exposed to excessive heat such as sunshine, fire or the like.
- Risk of Explosion if Battery is replaced by an Incorrect Type. Dispose of Used Batteries According to the Instructions.

# Get Close to NVR

## FRONT PANEL

NVR is the abbreviation of Network Video Recorder.

SNR-D5401

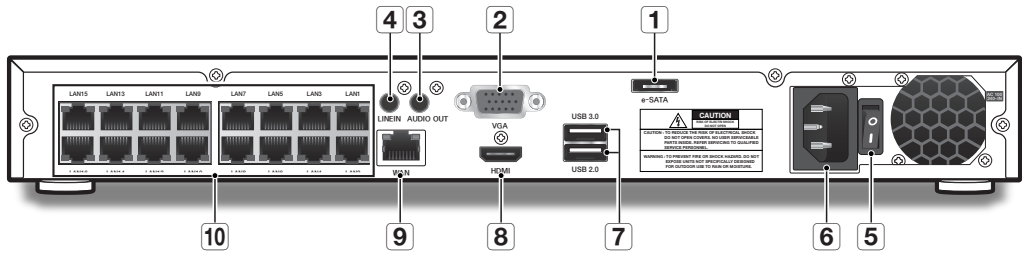


SN	Key or LED	Identification	Functions
1	Power indicator lamp	PWR	When the indicator lamp turns on in green color, it means that the NVR is powered normally.
2	Hard drive indicator lamp	HDD	If the "Red" indicator flashes, the hard drive is being read or written to.
3	IR Signal Reception Port	●	For reception of IR remote control signal.
4	USB	USB	USB Port



# BACK PANEL

SNR-D5401



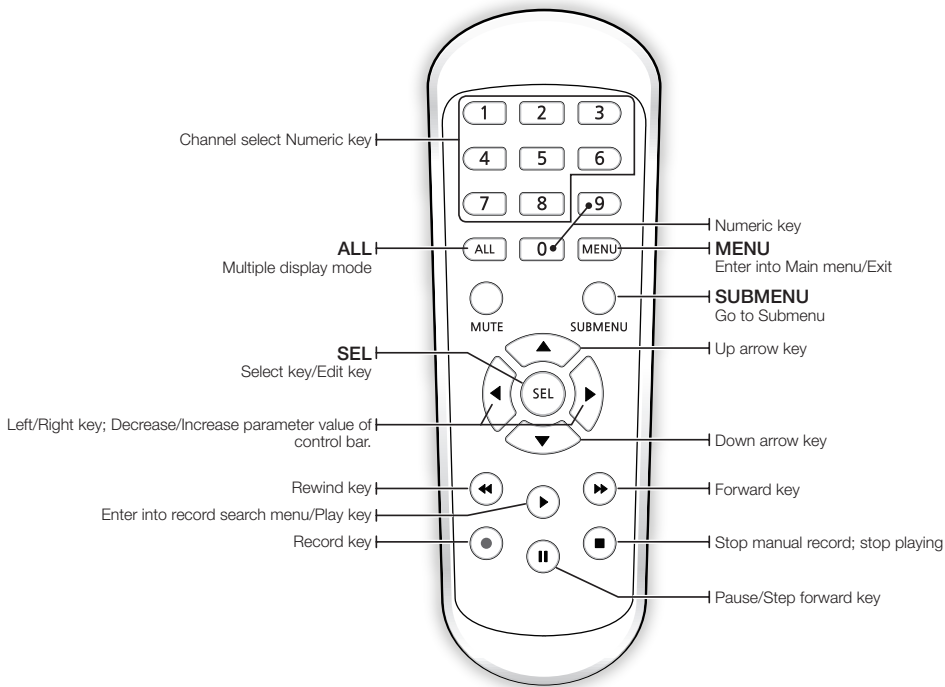
SN	Physical Interface	Connection Instructions
1	e-SATA	Connect to a e-SATA HDD
2	VGA Output	Connect VGA display device, such as PC monitor.
3	AUDIO OUT	No Function
4	LINE IN	No Function
5	Power Switch	Power the NVR on/off
6	Power Port	Connect to power cable provided along with the device.
7	USB	USB Port
8	HDMI Port	Connect to monitor
9	WAN Port	Router network I/O port/for connection to network camera
10	LAN Port	LAN: network port, PoE compliant, and capable of supplying power to camera.

• GET CLOSE TO NVR

# Get Close to NVR

## REMOTE CONTROLLER

Operation of remote controller



 ■ There is no function of Mute button.

# INSTALL HARD DRIVE

 ■ Do not remove the hard drive when NVR is operating.

## Installation of Hard Drive

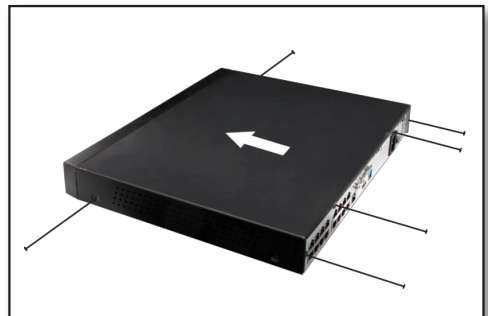
1. When power supply is disconnected, remove the screws at both sides with screwdriver, then remove the screws on the rear board, and then remove top cover of NVR.



2. Connect data and power cables of hard drive to motherboard. Mount the hard drive by mounting it onto the rack and connecting the power and data cables. Two groups of screw mounting holes are provided in the base frame of the NVR, respectively for installation of 3.5" hard drive and 2.5" hard drive. User should make selection based on their hard drive size.



3. First mount the screws onto the rear board and then mount the sides.

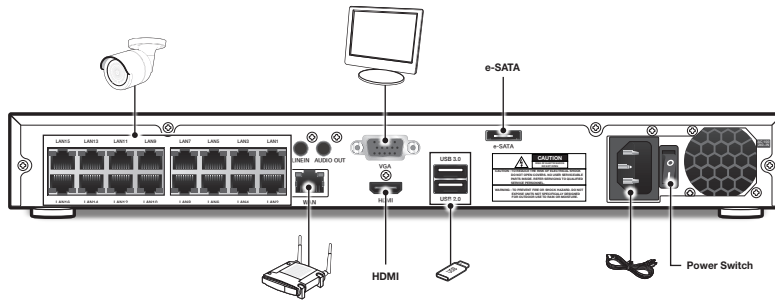


• GET CLOSE TO NVR

# Get Close to NVR

## CONNECT EXTERNAL EQUIPMENT

Connect the cameras to the NVR via the network cables. If you choose not to power the cameras via the LAN ports, be sure to use a 12V power adapter for power each camera.  
 Connect your monitor to the NVR using a VGA or HDMI cable to its respective port. Connect the NVR to the power cable that's supplied with the system.

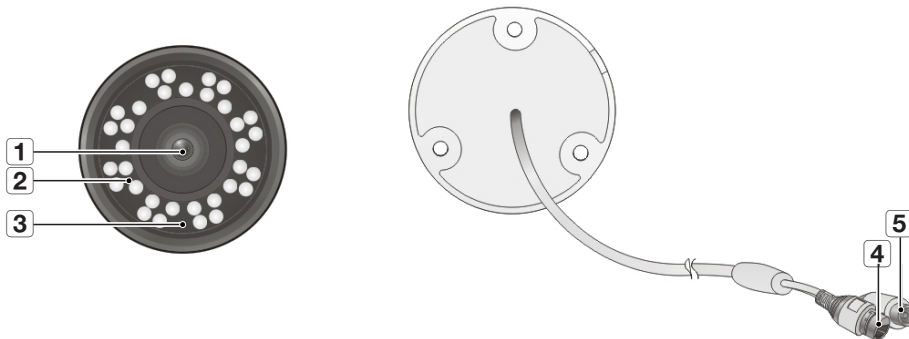


## CONNECT CAMERA

Connecting the Camera (SNC-4241BE)

Equipped with the IR LED and the illumination sensor, the camera enables you to monitor at all times, day and night. The camera is suitable for both indoor and outdoor use.

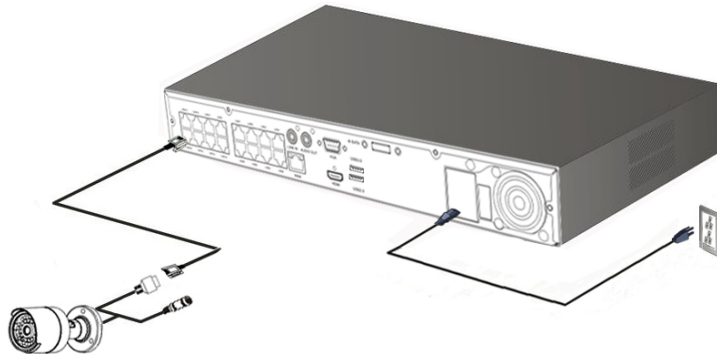
Do not fully expose the camera to rain. The camera must be installed under a shelter to avoid exposure to excessive rain or moisture.



SN	Name	Description
1	Lens	3.6mm focal length enables you to monitor at a wider field of view.
2	IR LED	Infrared LED lights are controlled by the illumination sensor.
3	Illumination Sensor	Detects incoming light to control the IR LED.
4	IPC Network Port	Connect to NVR via POE port or switch.
5	Power Cable	Use to power the camera if you would like to power up the camera by using separate DC 12V power adaptor.

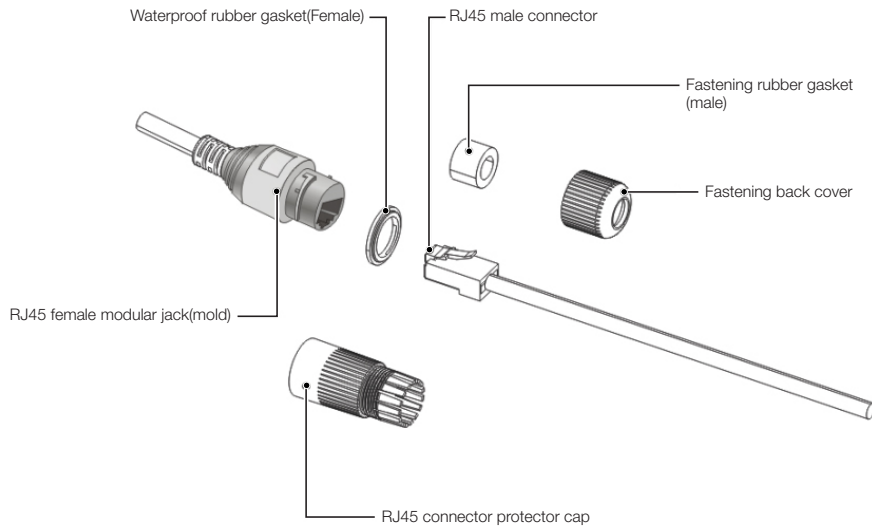
## CONNECT NVR

The following figures are based on Model SNR-D5401.



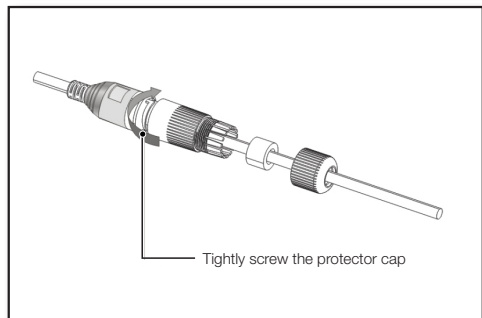
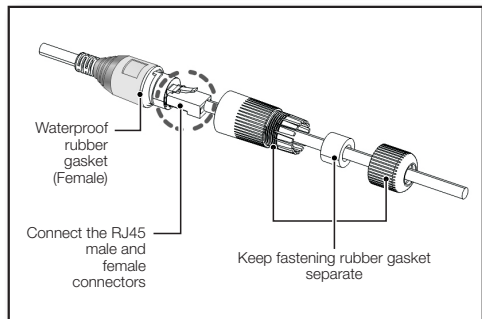
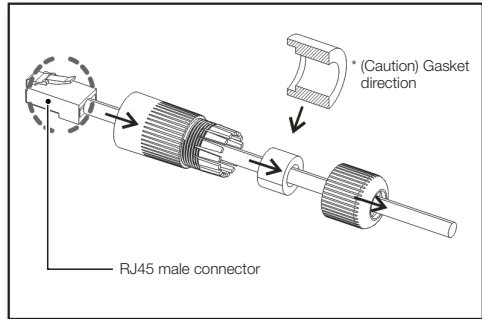
## HOW TO ASSEMBLE THE WATERPROOF RJ-45 COUPLER

The following figures are based on Model SNR-D5401.

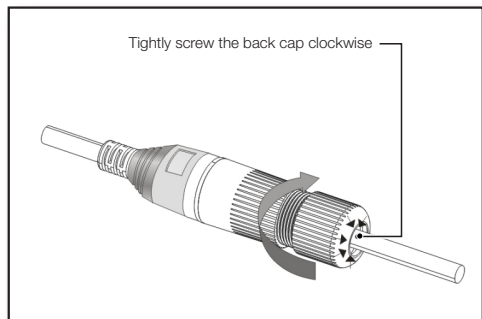


# Get Close to NVR

1. Insert the LAN cable through each component as shown below:  
Fastening back cover -> Fastening rubber gasket -> RJ45 connector protector cap

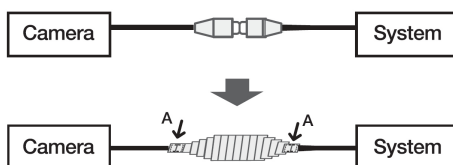


2. Insert the fastening rubber gasket into the RJ45 protector cap so the inner diameter of the fastening rubber gasket is tightened when the back cap is screwed on.



## CABLE PROTECTION

- As there may be direct leakage to the external cables when installed outside, please use waterproof butyl rubber tape to protect the cables.
- Wrap the cable jacket (Area A) and the cable connectors with waterproof (butyl rubber) tape so that more than half of the butyl rubber tape is tightly overlapped.
  - If the cable jacket is not wrapped properly, water will directly leak into the connectors.
  - Waterproofing butyl tape is made of butyl rubber which extends twice its normal length.
  - If the power cable terminal is not in use, wrap it with waterproofing tape.



## INSTALLING THE CAMERA

The camera can be installed on the wall, ceiling, shelf or a desired position using the provided mounting bracket.

- Adhere the installation template onto the ceiling and use it as installation locating tool. (Please refer to Page 14 of Quick Guide.)
- Choose an installation site that can sufficiently support the weight of the camera to be installed.



- Attach the camera bracket to the wall using the supplied screws.
- Adjust the direction of the camera to the desired direction, and tighten the bracket.
- Adjust the camera angle as needed.




- Connect the camera cable to the camera.

- Take caution when installing the camera outdoors because the cable connectors may be wet with moisture or with dirt buildup.
- Although the camera is IP66 rated, direct exposure to water or moisture may cause problem such as condensation.

# NVR Boot up

## SYSTEM INITIALIZATION

After connecting the NVR power cable to the wall outlet, press the power button and the initializing screen will appear.

-  The illustration in the user manual may not be the same as the menu interface in your monitor. All the illustrations are for users' reference.



## STARTUP WIZARD

After the NVR Startup is completed, the Startup wizard will be displayed. If you do not want to make any additional changes to your settings when it reboots, check "To disable Startup Wizard after reboot".

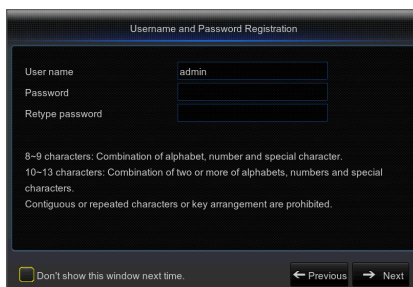
Wizard setting menu includes Homepage, Network setup, IPC setup, Record Schedule and hard disk maintenance.

- Homepage
- Admin password setting
- Hard drive management
- Network setup
- IPC setup
- Video recording Schedule
- General system configuration
- E-mail setting
- DDNS setting



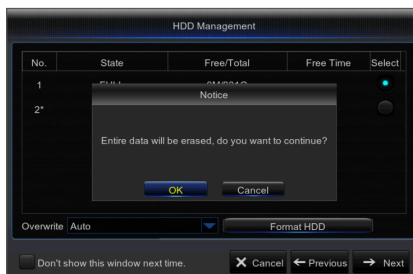
### 1. Set Admin Password

Please create a username and password for your NVR. Password MUST be 8~13 characters long. When password is 8~9 characters long, it should be with at least a combination of letters, digits and special symbols. If it is 10~13 characters long, it should be with at least a combination of two types of characters. 4 or more contiguous or repeated characters or key arrangement are prohibited, for example 1111, 1234, abcd, qwerty. Retype password: Re-enter the password set above.



### 2. Hard Drive Management

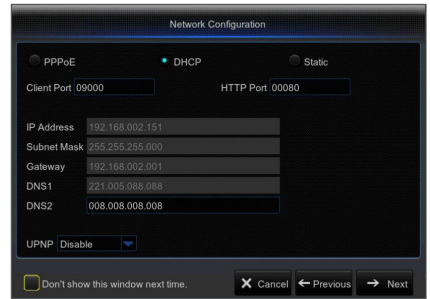
New hard drive(s) connected must be formatted before use. Upon connection, it will indicate to format new hard drive. Click on "Select" to select the unformatted hard drive. Click on "Format HDD" to pop up the user login window and enter the password to log in. A notice window will indicate "Entire Data Will Be Erased. do You Want To Continue?". Click "OK" to format the disk. When the progress bar is complete, the format process is completed.





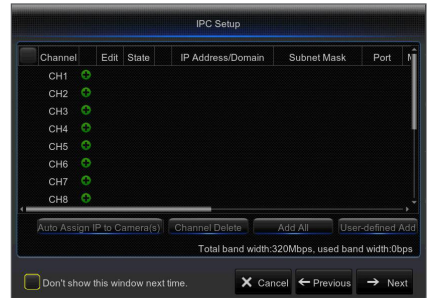
**3. Network setup**

In DHCP mode, the router will automatically allocate IP address to the NVR. If the NVR fails to obtain an IP address, refer to the NVR Router Guide. If the problem still cannot be resolved, contact technical support.



**4. IPC Setup**

User may add and delete IPC.



**5. Video Recording Schedule**

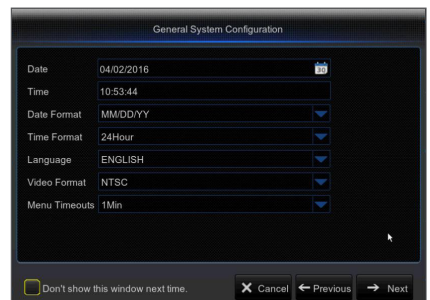
Select the channel and the date to be set. One week's schedule can be set. The record "schedule" of the current channel can be copied to any other channel or all channels.

- If there is no color in the record menu and record search, there is no recording saved.
- "Green" stands for normal record and "yellow" stands for motion record.



**6. General System Configuration**

You can set date, time, date format, time format, language, video format and menu timeouts.

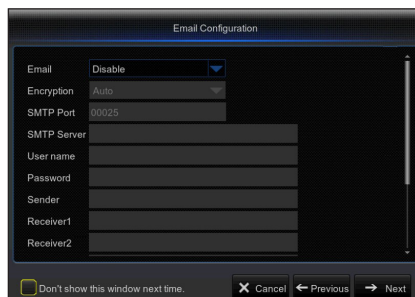


# NVR Boot up

## 7. Email Setting

Receive or Send NVR alarm email and set parameters like email address, SSL, email enable, and interval.

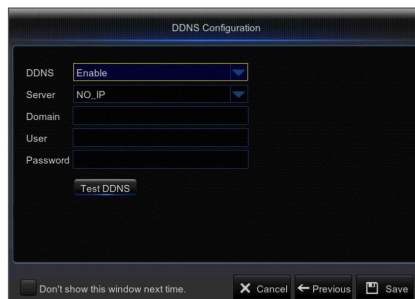
- **Encryption:** Disable, SSL, TLS and Auto optional. Auto means it can detect the encryption type automatically. It is recommended to set the encryption type as Auto.
- **SMTP Port:** Mail sending port used by SMTP (Simple Mail Transfer Protocol). Server is generally Port 25 or Port 465 when SSL is used by Gmail.
- **SMTP Server:** Enter the address of the server for the mailbox in use.
- **User Name:** Enter a server to connect to. For example, email "aaa@gmail.com" should correspond to server "smtp.gmail.com"
- **Password:** Enter the password of the SMTP server user.
- **Sender Address:** Sender's email address, which must correspond to the server used. For example, email "aaa@gmail.com" should correspond to server "smtp.gmail.com".
- **Receiver 1/2/3:** Recipient's mail address, used to receive alarm image and message from NVR side. If system alarms continually and sends email images frequently, save the images to another location or remove them, so as to avoid excessive space occupation and thereby affect your normal use of mailbox.
- **Time Interval:** A mail will be sent every three minutes by default. If the time interval for mail notification is set too short, email server may deem mails as junk mails, so they cannot be transferred normally.
- Click on "Test Email". If connection succeeds "Test E-mail" will be sent out.



## 8. DDNS SETTING

User may set DDNS under network type of PPPoE/Static/DHCP after applying dynamic domain service. User may remotely access NVR through domain by using browser in the form of http://applied domain: mapped HTTP port number when using DDNS domain name to access NVR.

- **Server address:** Select dynamic domain name server provider. Available domain name servers (HANWHA-SECURITY, DDNS\_3322, DYNDNS, NO\_IP, CHANGEIP, DNSEXIT)
- **Domain name:** Dynamic domain name of the host obtained from dynamic domain name service provider upon registration, for example, nvr2016.no-ip.org.
- **User Name:** The user name registered upon application for dynamic domain name.
- **Password:** The password set upon registration.
- Click on "Test DDNS". If connection is made, it will indicate "DDNS Test is Successful!". Perform remote access to the NVR by using dynamic domain name, for example, http://ddns.hanwha-security.com/snb5000: HTTP port number (e.g. 19010)



9. Click on "Save" to finish setting of startup wizard.

## MAIN INTERFACE



- When there is no HDD pre-installed or pre-installed HDD is not formatted, buzzer will be activated. If you want turn off the buzzer, please go to [Advanced -> Events -> Disk Full or Disk Error] to set the buzzer to 'Off'.

# NVR Menu

## POPUP MENU

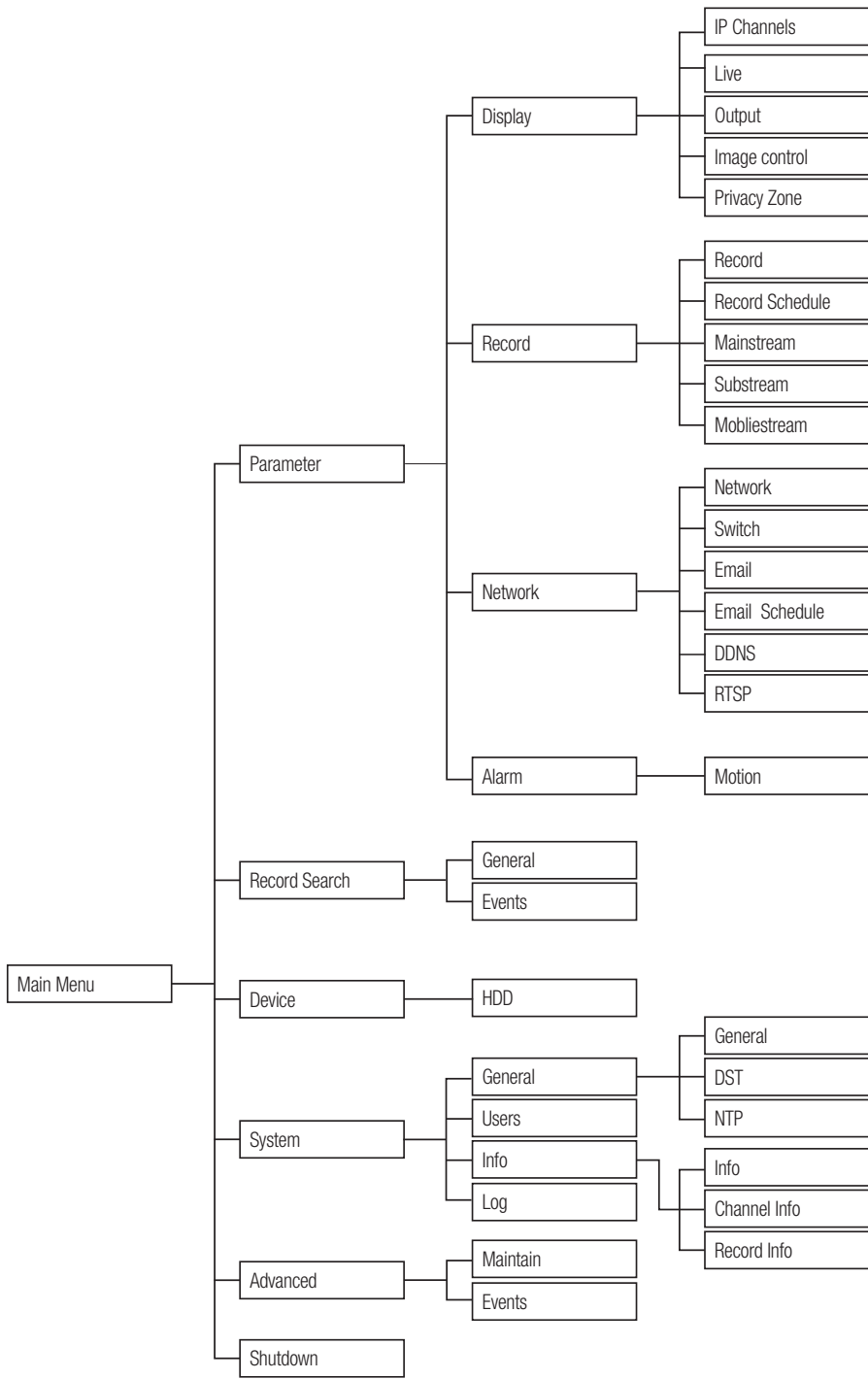
After finishing system initialization, right click the mouse to preview interface or slide the mouse to the bottom of screen to enter into Pop-up Menu. Now you could perform parameter setting and operate on Main Menu, Multi-Pics, Record Search, Sequence and Stream switching.

The options in the pop-up menu may be varied slightly according to different parameter settings. The options in the menu will be explained in detail in the following chapters.



SN	Component Name	Function
①	Main Menu	Access the main menu.
②	Manually Lock Screen	Sign out or access sign-in page.
③	4-Channel Layout	Display four channels of video/ Display nine channels of video/Display twelve channels of video/ Display sixteen channels of video
④	9-Channel Layout	
⑤	12-Channel Layout	
⑥	16-Channel Layout	
⑦	More Layout	Displays different channel layout
⑧	Stream Switch	Switch between Main Stream and Sub Stream
⑨	View Image Quality	Switch among Realtime, Balanced and Smooth
⑩	SEQ	Start or stop SEQ
⑪	Playback	Replay video recorded
⑫	Information	System Information.
⑬	Record	Enable or disable manual recording
⑭	Instant Playback	Display channel name Quick playback of video of last 5 minutes
⑮	Zoom	Hold and drag mouse cursor to select a frame of current video to zoom in
⑯	Color	Adjust the color of video

# MAIN MENU GUIDE



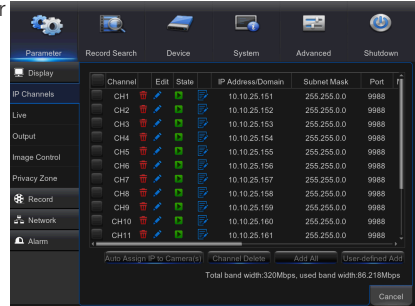
# NVR Menu

## MAIN MENU

On LIVE mode, click the mouse button, or [Menu] button on the remote controller, or click [ ] icon on the toolbar to enter the main menu screen.

If system interface is locked, please enter the password to log in. If you forgot your password, please contact technical support.

In Main Menu mode, you can make adjust the settings for Parameter, Record Search, Device, System, Advanced and Shutdown.




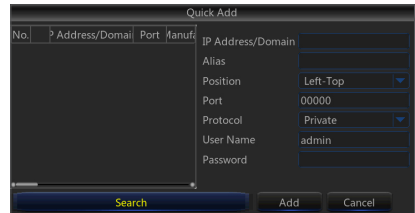
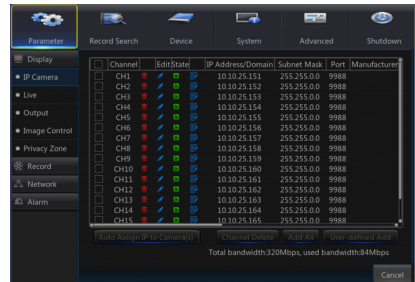
## Parameter

### Display

#### IP Camera

Go to "Main Menu" → "Parameter" → "Display" → "IP Camera" to enter into the interface.

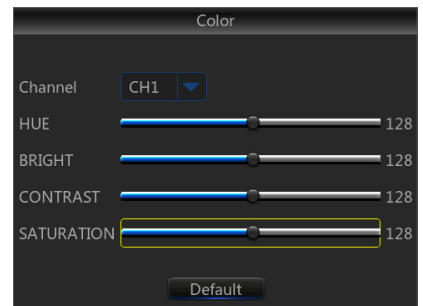
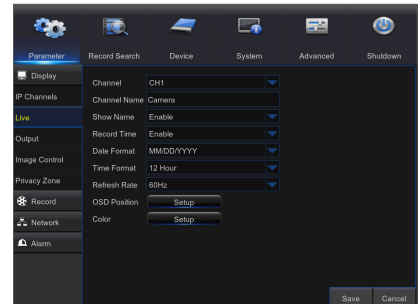
- **Channel:** IPC camera channel.
- **Edit:** Modify the name and location of channels, change other IPC or protocols, etc.
- **State:** Display IPC on-line state.
- : Modify IP address of IPC camera.
- **IP Address/Domain:** IP address of the IPC connected of the channel.
- **Subnet Mask:** IPC camera Subnet mask.
- **Port:** Connection port number of the currently set IPC.
- **Manufacturer:** Manufacturer for different IPC.
- **Device type:** Add IPC with different protocols.
- **Protocol:** Private
- **MAC Address:** Physical address for device.
- **Software:** Display current version of IPC.
- **Auto Assign IP to Camera(s):** Auto Assign IP to IPC.
- **Channel Delete:** Delete IPC
- **Add All:** Add All IPC
- **User-defined Add:** User-defined



## Live

Go to "Main Menu" → "Parameter" → "Display" → "Live" to enter into the interface.

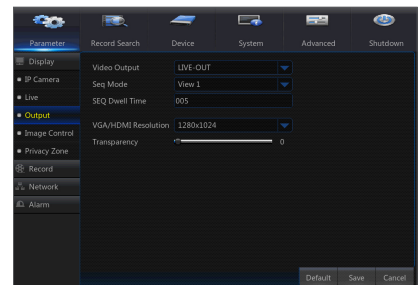
- **Channel:** Select channel number.
- **Channel Name:** Name marked on IPC.
- **Show name:** Enable or Disable display channel name.
- **Show Time:** Enable or Disable display time.
- **Date Format:** Set date format such as m/d/y or y/m/d and d/m/y.
- **Time Format:** 12 hour or 24 hour.
- **Refresh Rate:** IPC Refresh Rate 50Hz or 60Hz.
- **OSD Position:** Freely set the position of IPC name and time.
- **Color:** Adjust the hue, brightness, contrast and saturation of the IPC of the channel.



## Output

Go to "Main Menu" → "Parameter" → "Display" → "Output" to enter into the interface.

- **Video Output:** Live Output
- **Sequence Mode:** Set sequence mode
- **SEQ Dwell Time:** Sequence dwell time is set 5 seconds by default. User may set it as required.
- **VGA/HDMI Resolution:** VGA output or HDMI output. Including 1024×768, 1280×1024, 1440×900, 1280×720, 1920×1080, 2560×1440, 3840×2160.
- **Transparency:** Set the transparency of the menu in the range of 0—128.



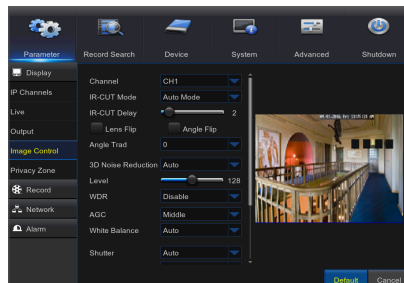


# NVR Menu

## Image control

Go to "Main Menu" → "Parameter" → "Display" → "Image control" to enter into the interface.

You can configure some settings of IPC, such as white balance, 3D noise reduction and image reversal etc.

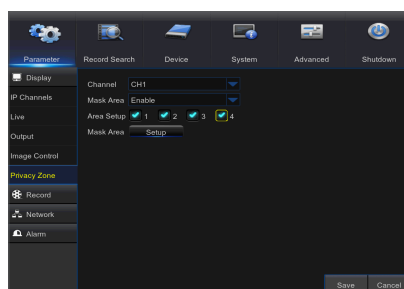


## Privacy Zone

Go to "Main Menu" → "Parameter" → "Display" → "Privacy Zone" to enter into the interface.

Privacy Zone is a feature to block certain area(s) in the camera's field of view from recording in the selected channel.

1. Select the number of the zone(s) to be blocked (maximum of 4 zones can be set for single channel).



2. Click "Setup" to adjust the position of the zone.
3. After finish setting, right click the mouse to return to the "Privacy Zone" page.
4. Click "Save" to save the setting.



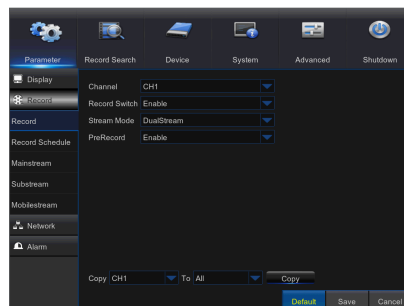


## Record

### Record

Go to "Main Menu" → "Parameter" → "Record" → "Record" to enter into the interface.

- **Channel:** Set the desired channel in the drop-down menu.
- **Record:** Set up the record status (Enable/Disable) of each channel.
- **Stream Mode:** Select Mainstream or DualStream.
- **PreRecord:** "Enable" status supports pre-record for motion detection record.

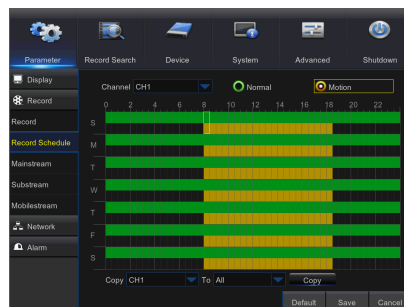


### Schedule

Go to "Main Menu" → "Parameter" → "Record" → "Schedule" to enter into the interface.

Select the channel and the date to be set. One week's schedule can be set. The record schedule of the current channel can be copied to any other channel or all channels.

- In the Record menu and Record Search menu, No Color stands for no record; "Green" stands for normal record and "yellow" stands for motion record .

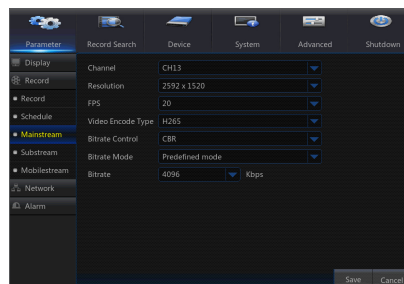


### Mainstream/Substream/Mobilestream

Go to "Main Menu" → "Parameter" → "Record" → "Mainstream/Substream/Mobilestream" to enter into the interface.

Mainstream, Substream and Mobile stream are the three video streams of IPC. Mainstream is mostly used for recording and the Substream and the Mobilestream is mostly used for remote network monitoring.

- **Channel:** Select a channel
- **Resolution:** Set IPC resolution as required
- **FPS:** 4MP IPC Min 1 and max 20,3MP IPC Min 1 and max 30,2MP IPC Min 1 and max 30.
- **Video Encode Type:** H.264 or H.265
- **Bitrate Control:** Dynamic and Statics
- **Bitrate Mode:** Predefined mode or user-defined mode
- **Bitrate:** Set IPC bitrate



# NVR Menu

## Network

### Network

Go to "Main Menu" → "Parameter" → "Network" → "Network" to enter into the interface.

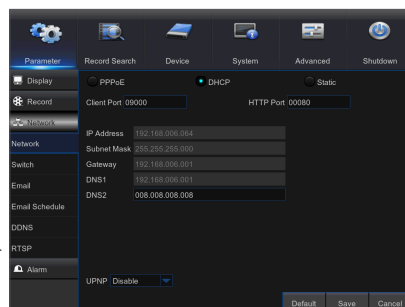
Select the type of network connection (PPPoE, DHCP, Static) and set Port, then user may remotely control the monitoring, recording, playback or backup of the NVR through the network.

For PPPoE, Static and DHCP, after setting IP address of NVR, the extranet port shall be mapped on the router before visiting NVR through public network.

Take DHCP as an example. In this mode, the router automatically assigns IP address for the NVR. After restarting the NVR or DHCP server, the IP address obtained by the NVR may be different. As a result, user should check the IP address and port number for each remote access of the NVR. The operation procedure is as follows:

1. Select DHCP, click Save and refresh the NVR. Input Client Port and HTTP Port (the two values must not be the same).
2. Set obtained IP address of the NVR and the mapping port.
3. Remotely visit the NVR by IP address: `http://Public network IP: HTTP port number (such as 00080)`  
`http:// Intranet IP: HTTP port number (such as 00080)` (Only available in the same LAN)

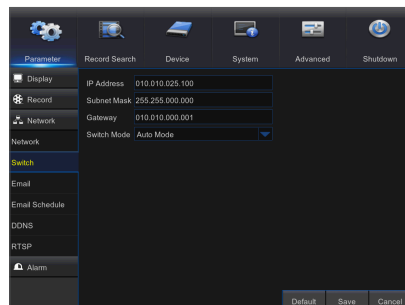
- Save after setting to make effective. If there are multiple NVR in a LAN, make sure their MAC addresses are different.



### Switch

Go to "Main Menu" → "Parameter" → "Network" → "Switch" to enter into the interface.

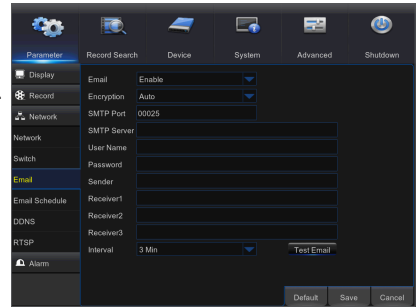
- **IP address:** Network segment of IP address of IP cameras when Switch Mode is set to Auto Mode.
- **Subnet mask:** Subnet mask of IP cameras when Switch Mode is set to Auto Mode.
- **Gateway:** Gateway of IP cameras when Switch Mode is set to Auto Mode.
- **Switch Mode**
  - Auto Mode: If Switch Mode is set to Auto Mode, NVR will assign IP address to the IP cameras automatically. And the IP address of IP cameras will be 10.10.25.151 to 10.10.25.166 for LAN1 to LAN16.
  - Manual Mode: If Switch Mode is set to Manual Mode, you need to search and add the IP cameras to the NVR.



### E-mail

Go to "Main Menu" → "Parameter" → "Network" → "Email" to enter into the menu interface. Receive or Send NVR alarm Email and set parameters like Email address, SSL, Email Enable, and Interval.

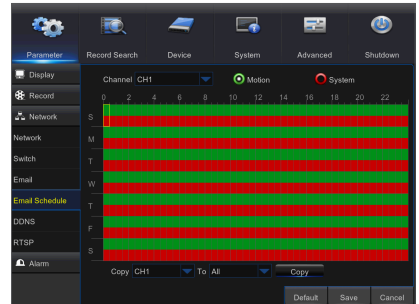
- **Encryption:** Disable, SSL, TLS and Auto optional. Auto means it can detect the encryption type automatically. It is recommended to set the encryption type as Auto.
- **SMTP Port:** Mail sending port used by SMTP (Simple Mail Transfer Protocol). Server is generally Port 25 or Port 465 when SSL is used by Gmail.
- **SMTP Server:** Enter the address of the server for the mailbox in use.
- **User Name:** Enter a server to connect to. For example, email "aaa@gmail.com" should correspond to server "smtp.gmail.com"
- **Password:** Enter the password of the SMTP server user.
- **Sender address:** Sender's mail address, which must correspond to the server used. For example, mailbox "aaa@gmail.com" should correspond to server "smtp.gmail.com".
- **Receiver 1/2/3:** Recipient's mail address, used to receive alarm image and message from NVR side. If system alarms continually and sends email images frequently, save the images to another location or remove them, so as to avoid excessive space occupation and thereby affect your normal use of mailbox.
- **Time interval:** A mail will be sent every three minutes by default. If the time interval for mail notification is set too short, email server may deem mails as junk mails, so they cannot be transferred normally.



### Email Schedule

Select the channel and the date you want to set. One week's schedule can be set. The record schedule of the current channel can be copied to any other channel or all channels.

- Green stands for Motion: Email will be sent in case of object motion;
- Red stands for Exception: Email will be sent in case of exception, e.g. DiskFull, DiskError, and VideoLoss.



# NVR Menu

## DDNS

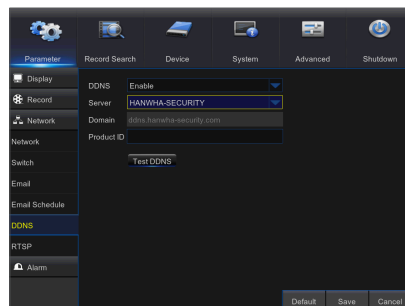
Go to "Main Menu" → "Parameter" → "Network" → "DDNS" to enter into the menu interface.

User may set DDNS in any one of the above 3 network connection types after applying dynamic domain service. User may remotely access the NVR through domain by using browser in the form of `http://applied domain: mapped HTTP port number`. When using DDNS domain name to access the NVR, user must confirm that the port can be normally connected to current IP on the public network and the settings for server address/host name/user/password/setting should be consistent with the NVR local setting.

- **Server address:** Select dynamic domain name server provider. Available domain name servers (HANWHA-SECURITY, DDNS\_3322, DYNDNS, NO\_IP, CHANGEIP, DNSEXIT)
- **Host name:** dynamic domain name of the host obtained from dynamic domain name service provider upon registration, for example, `http://ddns.hanwha-security.com/snb5000`
- **User Name:** The user name registered upon application for dynamic domain name.
- **Password:** The password set upon registration.

Click on "Test DDNS". If connection succeeds, it will be indicated that "DDNS Test is Successful!"

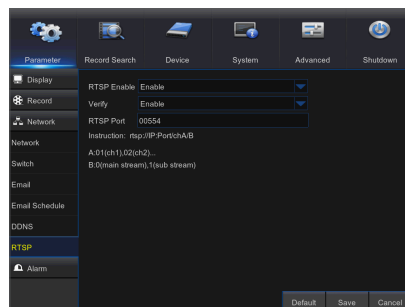
Perform remote access to the NVR by using dynamic domain name, for example, `http://ddns.hanwha-security.com/snb5000:HTTP port number (e.g. 19010)`



## RTSP

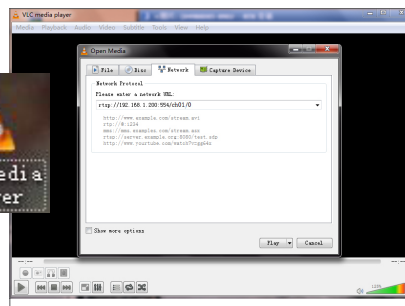
Go to "Main Menu" → "Parameter" → "Network" → "RTSP" Set user name and password to view video by PC software VLC.

- **RTSP Enable:** Enable/Disable
- **Verify:** Enable/Disable
- **RTSP Port:** 00554
- **Instruction:** rtsp://IP:Port/chA/B
- **A:** 01(ch1), 02(ch2)...
- **B:** 0(main stream), 1(sub stream)



Follow the instruction to input IP and port to preview video.

- User name and password of RTSP is same as system.

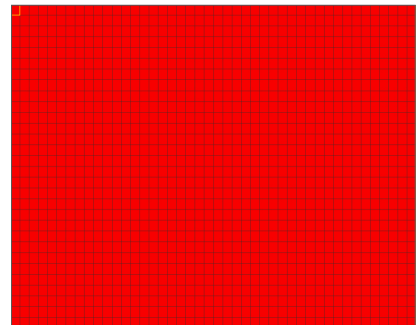
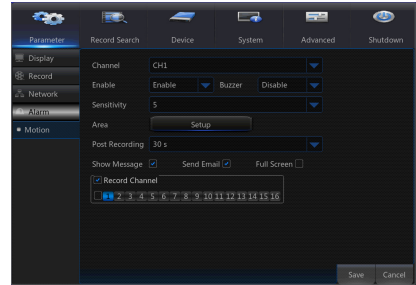


## Alarm

### Motion

Go to "Main Menu" → "Parameter" → "Network" → "Motion" to enter into the interface.

- **Channel:** Enable or disable Motion function.
- **Enable:** Enables the use of a switch.
- **Sensitivity:** Support 1-8 level, 8 is the highest level.
- **Buzzer:** When detecting object moving, an alarm is turned on (disable, 10 seconds, 20 seconds, 40 seconds and 60 seconds).
- **Show Message:** Messages will be displayed on the screen when a moving object is detected and alarms are enabled.
- **Send Email:** When a moving object is detected, an email will be sent to the address entered.
- **Full Screen:** When a moving object is detected, a message will be displayed in full screen.
- **Post Recording:** The duration time of the alarm recording can be set as 30 seconds, 1 minute, 2 minutes and 5 minutes.
- **Area:** Set the specific area(s) in the camera's field of view to monitor for motion. A single channel is divided into 44x30 (PAL) or 44x30 (NTSC) configurable grids. The red grids indicate that the motion detection in the selected area is enabled. Semitransparent boxes means motion detection in that area is disabled. Once you set your motion alert preferences, right click the mouse button to return and click Save to make the setting effective.
- **Record Channel:** When object motion is detected, the record channel setting will be activated.



Alarm Type	Functions & Descriptions
Video Loss	When the NVR fails to receive video signals due to some problems (camera damage, line dropout or damage, power failure), the alarm will appear.
Motion Detection	When IP camera detects object moving, alarm will be activated. Sensitivity is subject to the actual application environment test. Sensitivity is adjusted according to the sensitivity of the moving object detected and parameters set in the setting.
HDD Status	Alarm will appear when HDD does not work due to damage, power failure, HDD auto-overwrite off and insufficient space.

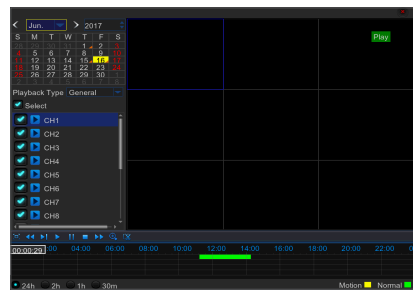
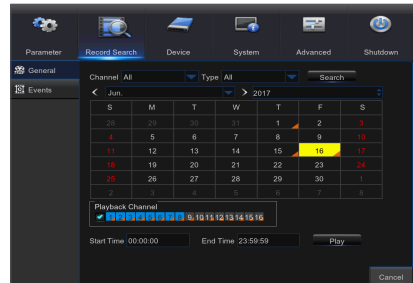
# NVR Menu










## Record Search

### Record Search

Go to "Main Menu" → "Record Search" → "Record Search" to enter into the interface.

- **Channel:** Select the channel you want to search.
- **Type:** Select the type the playback record. There are three options, All Normal and Motion.
- **Start Time/End Time:** Select the specific period of time. The default setting is from 0:00 to 24:00.
- **Playback Channel:** Click a date and select corresponding channel in Playback Channel. The selected channels shall not be more than 8.
- **Playback:** Select the desired year and month and click "Search". If there are any records, a yellow corner mark which shows the recording at specific date will appear at the down-right corner of the date sheet. Select the date checkbox and select playback channel and click Playback to enter into the interface.
- **Playback interface:** You can use the Playback Control bar to operate the Fast Forward (X2, X4, X8 and X16), Rewind (X2, X4, X8 and X16), Slow play (1/2, 1/4, 1/8, 1/16), Play, Pause/Frame. When playback ends, NVR will remain in the playback interface.



Key	Description	Key	Description
	Play		Full Screen/Quit Full Screen
	Pause		Rewind (X2, X4, X8 and X16)
	Stop		Fast Forward (X2, X4, X8 and X16)
	Slow play (1/2, 1/4, 1/8, 1/16)		Zoom in/Zoom out
	Record Clip		

## Time Axis setup, file clip and zoom in/out

The NVR supports the processing control bar function when playing back record files



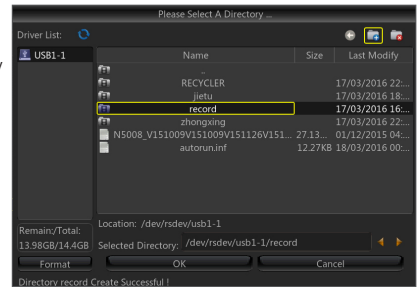
- **Time Axis zoom:** Default value is 24hours. Allow user to select 2 hours, 1 hour, 30 minutes.

## Detailed operation

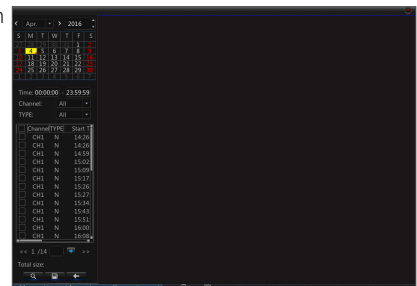
Fixed time axis: If you select [ 2h ] option, that means the processing control bar covers two-hour of content. The time range refers to 1 hour before and after the middle point.

Record clip and backup function and playback zoom in/out function.

- **Clip and backup:** When it is under single channel playback, the [ ] icon will appear in the Play Control bar. Click the icon to start video clip function, click the icon again to end the function and pop up the dialog. Now, you may save the clipped video file.
- **Zoom out:** When it is under single channel playback, the [ ] icon will appear in the Play Control bar. Click the icon to zoom in certain area of the playback screen and right click mouse to return the Playback page.



Click on the [ ] button as shown above to turn to the figure below, and then select time, channel and video type to search and display the video.



# NVR Menu

## Record Search

### Event Search

Go to "Main Menu" → "Record Search" → "Event Search" to enter into the interface.

In this page, user may search details by date, time, channel and record type. The relevant operations are as follows:

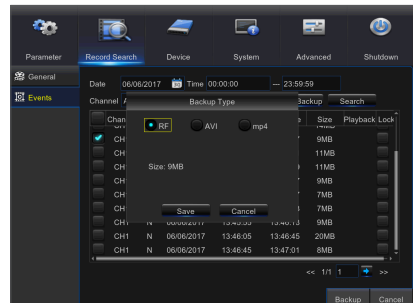
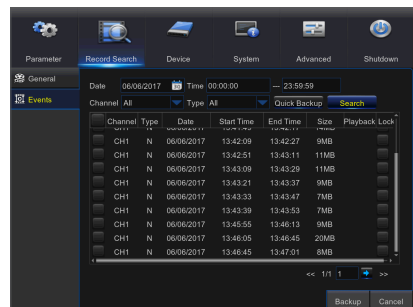
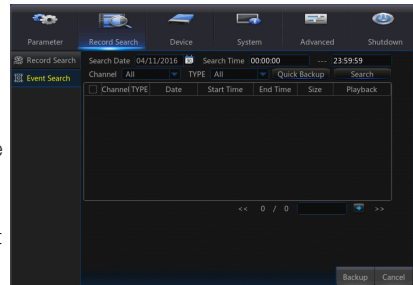
- **<<** : Click the button to go to previous page when viewing events (except the first page). When viewing the first page, click this button to display the event list in the first page.
- **>>** : Click the button to go to next page when viewing events (except the last page). When viewing the last page, click this button to display the event list in the last page.
- **Input box + arrow** : Input the desired record event page in the input box and click arrow button to jump to the input page.
- Two types of backup: Quick Backup and Backup.
- Quick Backup: Backup recording within 24 hours.

If you want to back up a record in the detailed file list, you may check the box on the left of the record ("✓" means it has been selected) and click "Backup" to enter into "Select backup type" (Make sure USB flash drive or other portable storage device are connected).

If you want to back up with USB, select USB and click OK to start processing and you may see the backup progress.

After backup finishes, message Backup Finishes will appear at down-right corner.

-  Before backup, connect devices for backup (USB flash drive or other devices with USB interface)

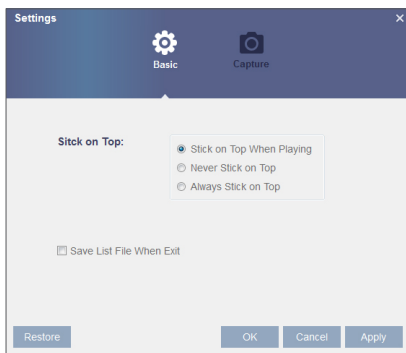
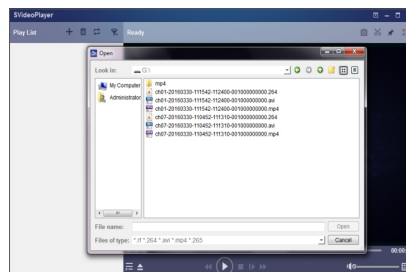
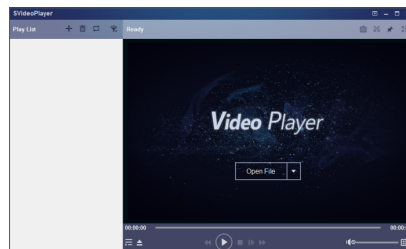




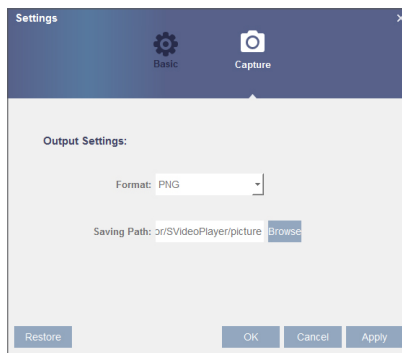
## Play Backup Files

1. Copy backup files to the computer.
2. Open SVideo player and click [ + ] or [ Open File ▾ ].  
For example, if you want to choose \*.rfl, \*.avi, \*.mp4, add backup file and select a file to play.

- Play: Click to play file
- Pause: Click to pause.
- Stop: Click to stop playback.
- Frame Forward: step forward by frame
- Slow Play: Click to play at 1/2, 1/4, 1/8, 1/16 speed.
- Fast forward: Click to play at 16x, 8x, 4x, 2x speed.
- Open file/Open Directory
- Expand/pack up the list.
- Screenshot: Save path: C:\Users\Administrator\SVideoPlayer\picture
- Cut: Save path: C:\Users\Administrator\SVideoPlayer\video
- Full screen display
- Never on top
- Always on top
- On top during playing
- Adjust volume
- Window Division  
1/4/9/16 channels optional.
- Add folder or file.
- Playback mode, Single, Order, Repeat one, Repeat ALL are optional
- Delete all files in the list.
- Search File
- Language/Settings



Basic Settings: Set on-top mode



Capture Settings: Set the path to save image

- It is recommended to use SVideo Player contained in compact disk for playback. Use of any other player may cause compatibility problem.

# NVR Menu

## Device

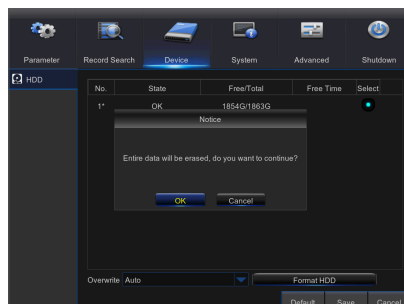
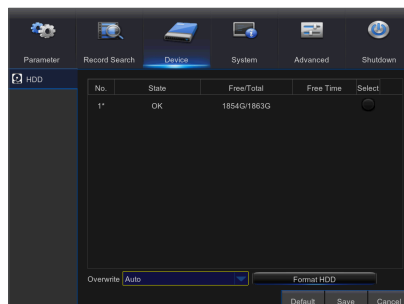
### HDD

Go to "Main Menu" → "Device" → "HDD" to enter into the interface.

When NVR is connected to a HDD, the system will automatically detect if the HDD is normal or not; if the HDD needs to be formatted, status will be shown as "Not formatted". Select the HDD and format the HDD. If the system detects the HDD is in normal state, the HDD status will be shown as "Normal".

- **No.:** Number of HDD connected to system.
- **Status:** It shows the current status of HDD. HDD status include 'OK' and 'Full' etc.
- **Free/Total Space:** Remaining or total space of the HDD
- **Free Time:** Remaining time for the HDD recording according to currently set "Resolution", "Encoding Rate" and "Frame Rate" of image.
- **Overwrite:** When set to Auto, the NVR will overwrite the oldest files on the hard drive if hard drive space is full. When set to OFF, the NVR will stop recording if hard drive space is full, and prompt that the hard drive is full.
- **Format HDD:** Format HDD for the first use.

 ■ Recording can only be performed when HDD is in "OK" state.



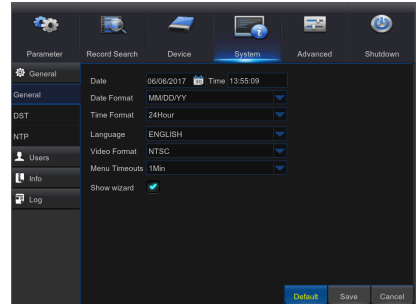
# System

## General

### General

Go to "Main Menu" → "System" → "General" → "General" to enter into the interface.

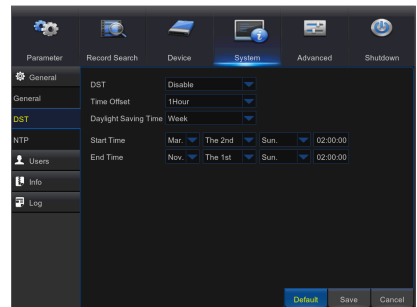
User may set Date, Time, Date Format, Time Format, Language, Video Format, Menu Timeouts and Show Wizard in this page.



### DST

Go to "Main Menu" → "System" → "General" → "DST" to enter into the interface.

Enter into the interface set DST, Time Offset, Start Time and End Time.

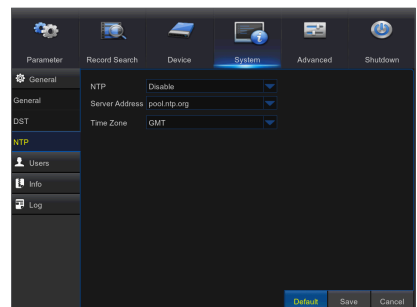


### NTP

Go to "Main Menu" → "System" → "General" → "NTP" to enter into the interface.

- **NTP service:** Enable/Disable NTP function.
- **Server Address:** Select NTP server (time.windows.com, time.nist.gov, pool.ntp.org).
- **Time Zone:** Corresponding time zones for various nations or regions.
- **Update Now:** Enable NTP function and save parameters and click Update Time to calibrate the system time.

■ When NTP function is set to "Enable", system will calibrate the system time at every 00:07:50 and every start-up.

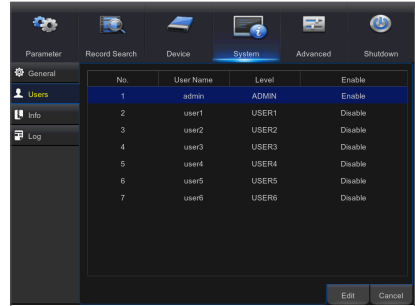


# NVR Menu

## Users

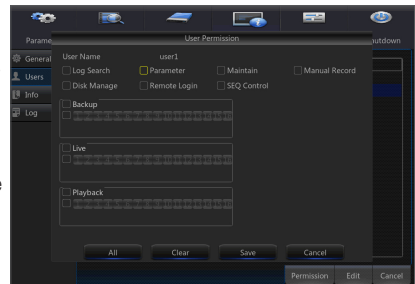
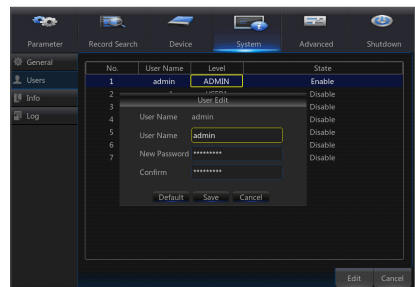
Go to "Main Menu" → "System" → "Users" to enter into the interface.

It supports up to seven users, including one administrator and six users. Click **[Edit]** button to enter into the **[User Edit]** interface to input user name and password.



The user name must consist of 1-8 letters, characters or figures. Password MUST be 8-13 characters long, and the combination of at least two types of characters.

- **Set user password:** Administer is authorized to set user common user's authority.
- **Log Search:** allow you check all the system logs.
- **Parameter:** allow you set all the parameters.
- **Maintain:** allow you update version, recover ex-factory value, device reboot and shut down.
- **Manual Record:** allow you manually start/stop record.
- **Disk Manage:** allow you manage and control the HDD and USB drive.
- **Remote Login:** allow you remotely login into the NVR.
- **SEQ Control:** allow you sequence live screens for all the channels.
- **Backup:** -Select the ENABLE option and select channel for backup, the user is allowed to back up the record in the selected channel.
- **Live:** Select the ENABLE option and select a channel and the user is allowed to view all the live images in the selected channel.
- **Playback:** Select the ENABLE option and the user is allowed to playback the selected record in the channel.



## Info

### Info

Go to "Main Menu" → "System" → "Info" → "Info" to enter into the interface.

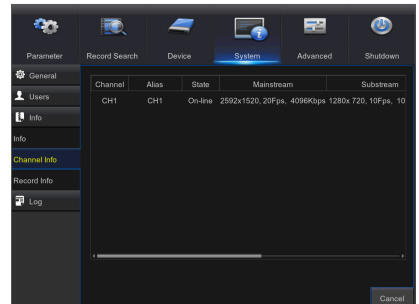
User can view system information, including Device ID, Device Name, Device Type, Hardware Version, Software Version, IE Client Version, IP Address/Domain, MAC Address, HDD Capacity, Video Format, Media Port, Web Port, P2P ID, etc.



### Channel Info

Go to "Main Menu" → "System" → "Info" → "Channel Info" to enter into the interface.

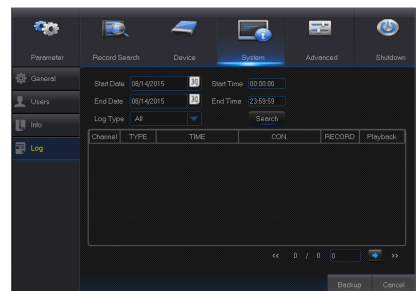
User may view the information of various connected IPC, including state, Mainstream, Substream, Mobilestream, motion detection, privacy zone, etc.



## Log

Go to "Main Menu" → "System" → "Log" to enter into the interface.

User may search log information in different period of time. Click "Backup" to save all the log information.



# NVR Menu

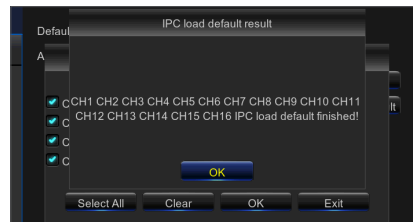
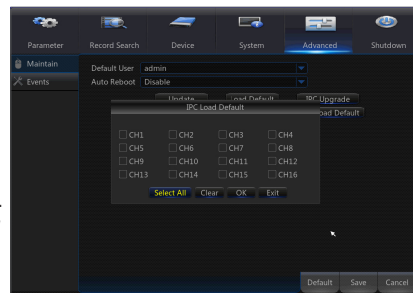
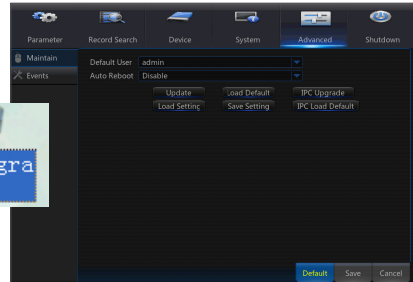
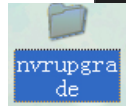
## Advanced

### Maintain

Go to "Main Menu" → "Advanced" → "Maintain" to enter into the interface.

- **Auto Reboot:** Enable the auto maintenance function to reboot system regularly at every day/week/month. When Auto Reboot is enabled, the NVR should be in the main interface and no user operation.
- **Upgrade:** Decompress update file package and copy the upgrade file folder named "nvrupgrade" the upgrade program is inside to root directory of USB flash drive; Insert the USB flash drive into USB port of NVR; Click <Upgrade>.
- **Load Default:** If [Load Default] is selected, you can initialize the system to the ex-factory default. Click "Load Default" and select items to be restored
- **Load Settings:** Load parameters in the removable storage device to NVR.
- **Save Settings:** Save the set parameters of user's NVR to the removable storage device.
- **IPC Upgrade:** IPC can be upgraded by the connected NVR. Decompress IPC upgrading file and copy \*.sw file to nvrupgrade directory and copy to the root directory of USB flash drive, Insert the USB flash drive into USB port of NVR -> Select the IPC you want to upgrade -> Click Upgrade to start upgrading IPC.
- **IPC Load Default:** Click "IPC Load Default" and then click "OK" to confirm. Then it will prompt that IPC is loaded default successfully and IPC will be restarted. Click "Select All" is to select all channels to do load default for all cameras. "Clear" is to clear all selection, and "Exit" is to exit.

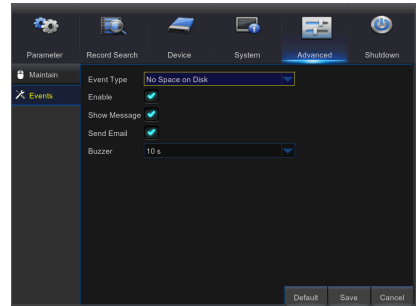
- Do not take out the USB memory or turn the power off during upgrading. When the update is done, system will be automatically restarted. After about 5 minutes, the upgrading will be finished. It is recommended to load ex-factory default after upgrading. The auto maintain function can be effective only when the NVR returns back to Preview mode with no any operation within the set auto maintain time.



## Events

Go to "Main Menu" → "Advance" → "Events" to enter into the interface.

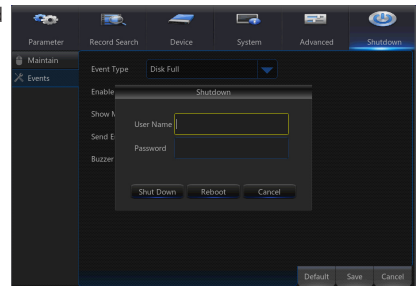
- **Event Type:** Support three abnormal types: Disk Full, Disk Error and Video Loss.
- **Enable:** Active alarms for abnormal situations.
- **Show Message:** You can set show message on the screen when sensor alarm is detected.
- **Buzzer:** How long the buzzer will sound (OFF, 10s, 20s, 40s, 60s).
- **Send Email:** Select to send Email to specified Email address when abnormal events appear.




## Shutdown

Go to "Main Menu" → "Shutdown" to enter into the interface.

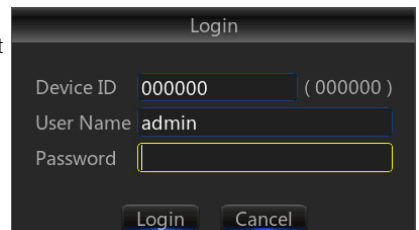
Shutdown function requires user to login by inputting User Name and Password so as to shut down or reboot system.



## MENU LOCK

In consideration of system safety, user may click the icon [  ] on the toolbar when he leaves away from NVR and the system interface will be locked. User has to input Device ID, User Name and Password on the login interface to unlock. In case that the password is forgotten, contact the technical personnel.

- Administrator has all authorization of menu operation and users have limitations for authorization and have to get authorization from administrator.



# NVR Menu

---




## SPLIT MODE

---

There are many display modes in video channel, including single channel display, SEQ display and split mode.


## STREAM SWITCH

---

Click [  ] to switch to Sub Stream, Click [  ] to switch to Main Stream. When you switch to 16 channels live view mode, you can only view 12 channels at Main Stream. If you would like to view all 16 channels, please click [  ] to switch to Sub Stream.


## VIEW IMAGE QUALITY

---

You can click [  ] to switch among Realtime, Balanced and Smooth.

## RECORD SEARCH

---

Click [  ] icon on the toolbar to enter into the Record Search interface to search and playback. Refer to former chapter 3.3.1 for specific operating method.

## START SEQUENCE

---

After set channel sequence time (Refer to chapter3.2.1.3), click Start Sequence icon [  ] on the toolbar to start sequence.



# Web Application Manager

## DOWNLOAD AND INSTALLATION OF PLUGIN

If your computer system is Windows 7, you may need to setup the user authority for remote control, or you may be unable to backup or record.

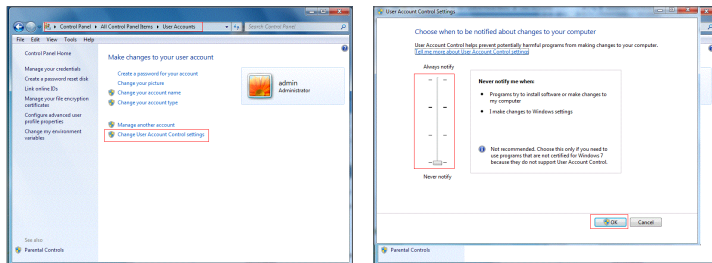
Vista System: Start → Setup → Control Panel. Set user authority in control pane shown as the following picture. Remove the Tick "√" in front of the option "Use UAC to help protect your computer" and confirm OK

### WirelessPlugin Download and Installation

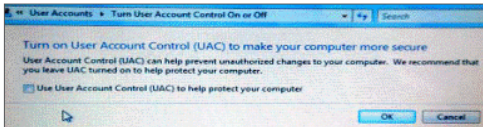
If your computer system is Windows 7, you may need to setup the user authority for remote control, or you may be unable to backup or record.

Vista System: Start → Setup → Control Panel. Set user authority in control panel as the following picture. Remove the Tick "√" in front of the option "Use UAC to help protect your computer" and confirm OK.

#### WIN7



#### Vista



- If the web plugin is not downloaded successfully, please check if your browser's safety level or firewall setting is set too high. Please open IE browser → [Menu Bar] Tools → Internet Options → Security → Internet → Custom level → Enable the options.

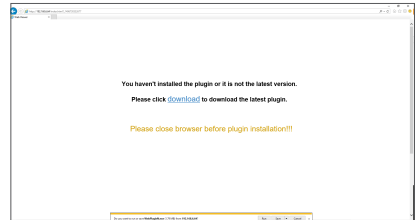


# Web Application Manager

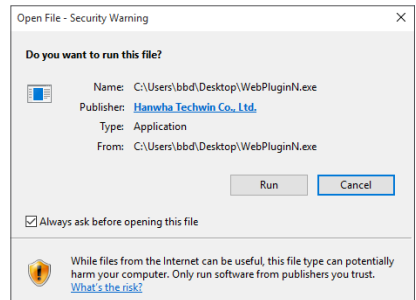
## Download and Installation of Plugin for IE

Open your web browser and input the IP address of NVR, such as:  
<http://192.168.1.200:80> .

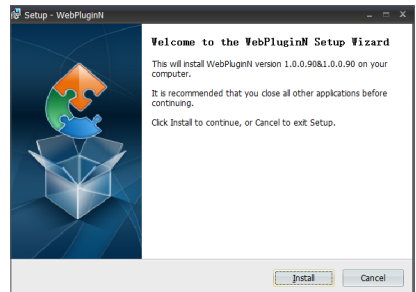
Click on "download", and then click on "Run" in being downloaded File - Security Warning box"



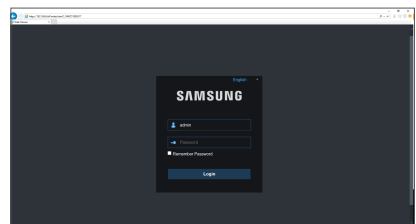
Click on "Run" in warning box reading "Do you want to run this software?"



Click on "Install" in the dialog box "Setup-webpluginN".



Shut down IE browser and restart it, and then enter IP address plus HTTP port of NVR in address bar to access login page.



## Download and installation of plugin for Mac SAFARI

Enter IP address of NVR in address bar of Mac SAFARI, for example, <http://192.168.1.200>, and click on "download" to download the plugin.



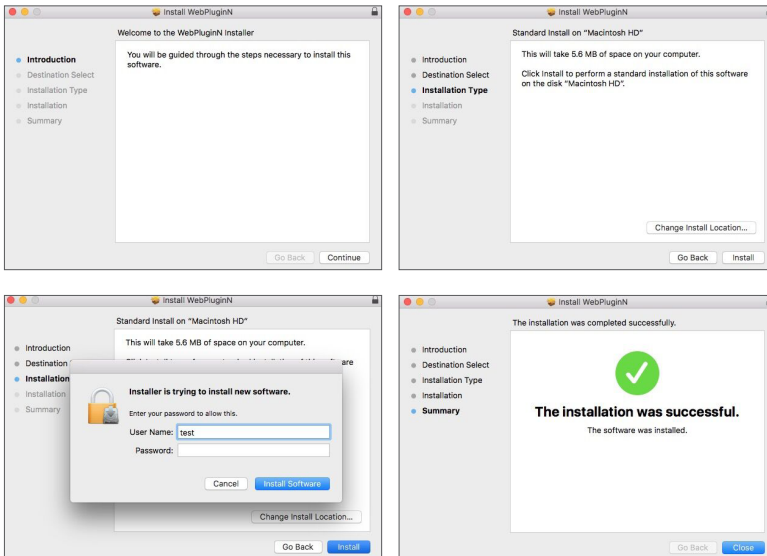
Locate the downloaded plugin "WebPluginN.dmg" and double click on it




Install the plugin by double clicking on "webpluginN.pkg".

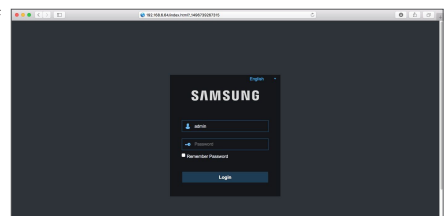


Click on "Continue">"Install". Enter user name and password for login to Apple computer. Click on "Install">"Shut down" to finish installation.



Shut down Mac SAFARI browser and restart it, and then enter IP address of NVR in address bar to access login page.

- 
 The above instructions are for first time installations. You can use the same plug-in for IE and Google Chrome. If plug-in for windows OS was installed on IE or Google Chrome once, you need to use IE which needs to be run as administrator. Use Google Chrome to log in to NVR. If you use Google Chrome to log in, please use Version 44 or lower. Please note that it doesn't support V45 or above.

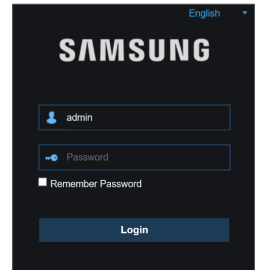


When you do a firmware upgrade, you have to re-download and re-install the plug-in. Based on different situations, it may not be able to install the plug-in through browsers. In this case, please copy and install the plug in on the CD attached (WebPluginN\_Windows\_YYYY\_MM\_DD.exe for Windows system, and WebPluginN\_Mac\_YYYY\_MM\_DD.dmg for Mac).

# Web Application Manager

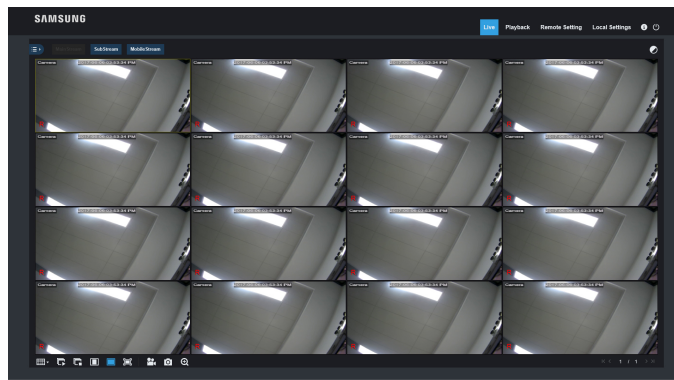
## WEB APPLICATION MANAGER LOGIN

After plugin installation, please input user name and password, select Sub Stream or Mobile Stream (In general, selectSubStream for intranet and MobileStream for extranet.), and select language in the interface. There is an option for opening all channel preview, select it to open all live pictures. Press Login to log in client and visit NVR remotely. Set password as per introductions of user management in system setting.



## LIVE INTERFACE

Log in and go to live view. Menu Bar: Live, Playback, Remote Settings, Local Setting and Logout












## LIVE

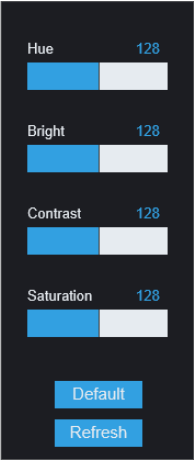
### Live Display

Log in the Web Application Manager, system will be defaulted to enter into <Live>interface. You can click [Play] button to Open/close live images, on-spot record, capture, and many live display modes.

#### Buttons on a single live interface:

-  : Switch display mode in channel window.
-  : Open the images on Live window.
-  : Close all the Live channels.
-  : Original proportions.
-  : Stretch.
-  : Click to maximize the current window to full screen. Right click to popup menu option and select Exit Full Screen.
-  : Record switch: the remote record switch of client. Record will be automatically saved to a specified position on PC after the function is enabled.
-  : Snapshot: Capture the selected live image and save it to a specified position on PC. The image is saved as \*.bmp format.
-  : Digital ZOOM.

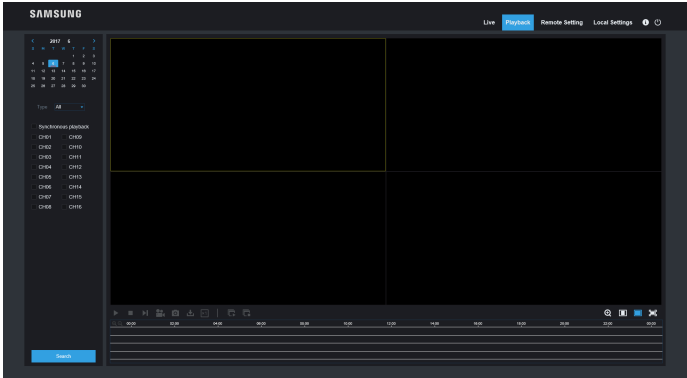
## Video Control



Hue: Adjust the hue of video.  
 Bright: Adjust the brightness of video.  
 Contrast: Adjust the contrast of video.  
 Saturation: Adjust the saturation of video.

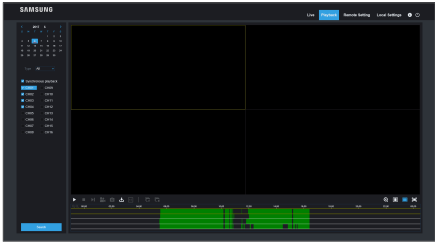
## Playback

Click [ **Playback** ] to enter into Playback interface to remotely view the records in NVR HDD.  
 It supports 4 channels playback.




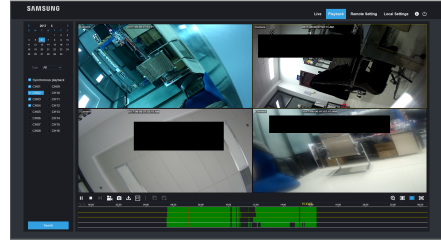
## Record Search




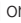
Record playback procedure  
 Firstly, select the date you want to check and select 4 channels. Any record files in current channel at current date will be displayed in the status bar of the interface.



# Web Application Manager

Secondly, select record type (Normal record, Motion record and All) and channels, and then click [  ], and time axis panel will display specific time quantum. On the time axis, green part stands for normal record, yellow stands for motion record and original part stands for no record during this period.

















Before playback, choose to enable playback 4 channels synchronously. If you tick-select [  ], that means the selected channel will playback synchronously; otherwise, you could separately control the channels playback. Thirdly, click [  ] to start record playback. When mouse cursor is moving on the time axis, the time point of current position will be displayed on the time axis screen. Click the icon [  ] or [  ] to zoom in/out the time bar display ratio.

## Playback Control


Playback control bar




Detailed brief description is shown as below list

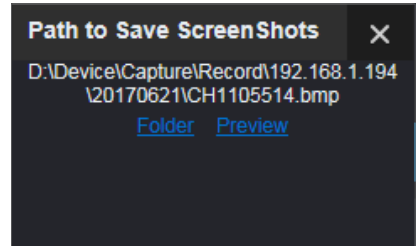
Key	Description	Key	Description
	Play		Open all the playback channels
	Pause		Slow playing 1/2, 1/4, 1/8, Fast playing 1/2/4/8
	Stop		Digital ZOOM
	By frame		Original proportions
	Record Clip		Stretch
	Snap		Full Screen
	Download		Stop playing all the playback

### Record file clip


After opening playback, click [  ] icon to clip the selected file; and click again to stop the clip function. Then playback clip is successfully done. Record clip file will be saved as \*.rf format.

### Capture function

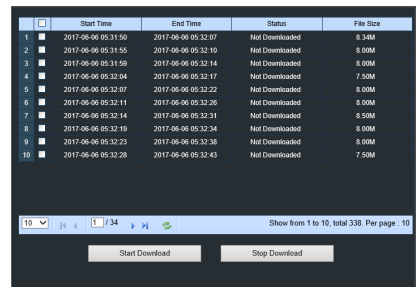
Move the mouse cursor to the channel you want to capture, and click [  ] icon to capture the live images remotely. After capturing the images successfully, a path prompt box will be popped up. The captured file will be saved as \*.bmp format.



### Record file download

Click download icon [  ] on the control bar to display all the matched record file according to the search conditions of channels.

Tick-select the record file you want to download and click [Start download] .System will download the record file in sequence and save to local PC. The downloading file will be displayed in percentage form. After downloading finished, “completed” will be displayed on the status bar.



## Remote Setting

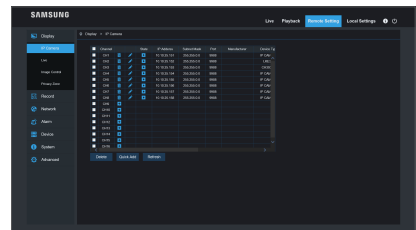
Click Remote Setting to enter into the interface, including Display, Record, Network, Alarm, Device, System and Advanced.

### Display

Unfold [Display] option to find its sub-options: IP Camera, Live, and Image Control and Privacy zone.

#### IP Camera

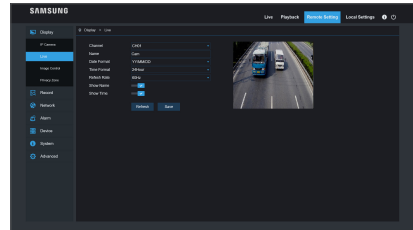
Display the information of added IPC. It can quickly add the on-line IPC and delete the added IPC.



# Web Application Manager

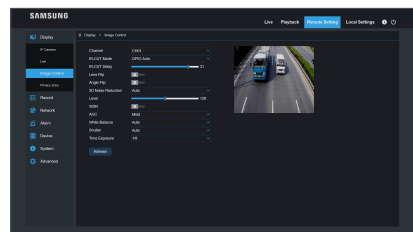
## Live

You may change channel name, position, channel preview and relevant parameters. If show time is set as **<disable>**, current NVR system time will not appear on the screen on Live mode.



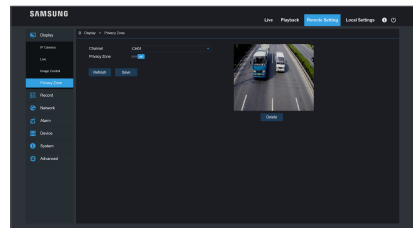
## Image Control

The IPC some remote settings such as white balance, 3d noise reduction image reversal and so on.



## Privacy Zone

Each channel can set 4 privacy zones. The relevant parameters should be consistent with NVR local setting. Select zones to be deleted and click "Delete" and click "Save" at up-right corner.



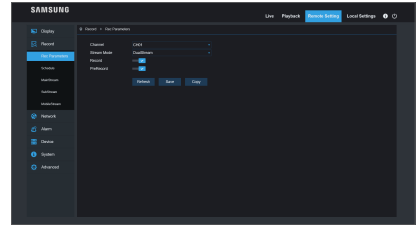


## Record

Click <Record> option to unfold its sub-options: Record parameter, Schedule and Stream configuration.

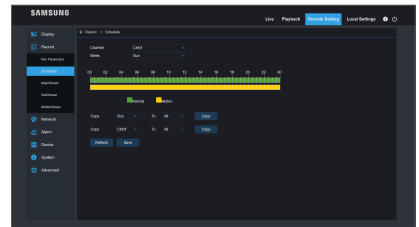
### Record Parameters

The parameters should be consistent with NVR local setting.



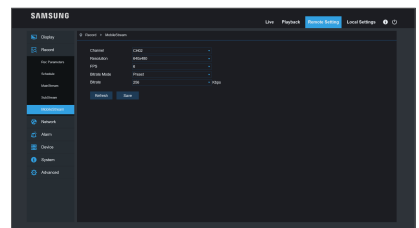
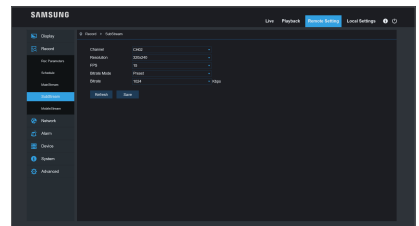
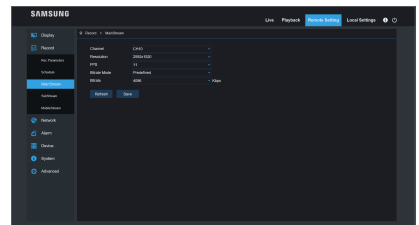
### Record Schedule

The parameters should be consistent with NVR local setting. Green stands for Normal record. Yellow stands for Motion detection.



### Stream setting

User may set Mainstream, Substream and Mobilestream. The relevant parameters should be consistent with NVR local setting.



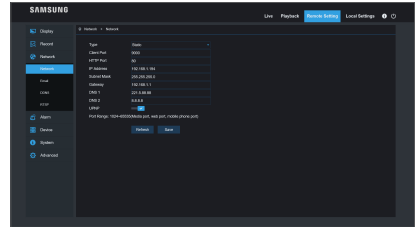
# Web Application Manager

## Network

Unfold <Network> to show its sub-options: Network, Email, and DDNS configuration.

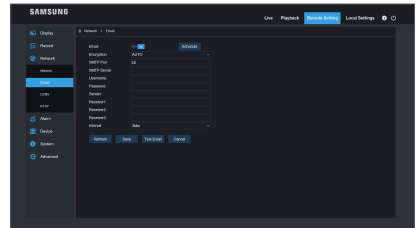
### LAN setting

NVR supports Static/DHCP/PPPoE modes. System default network type is <DHCP>. User can set parameters as required. After the network parameters are modified successfully, NVR will automatically restart.



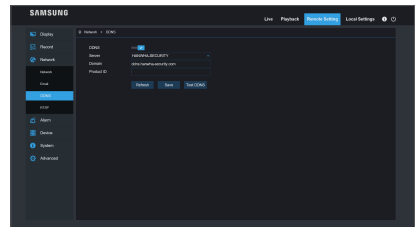
### Email

Set NVR alarm Email configuration parameters, including Email address, SSL, Email Enable, Interval and Email Schedule, etc. Detailed parameters should be consistent with NVR local setting.



### DDNS

After user applies for DDNS service, you could enable <DDNS> function under any one network type mode (Static, DHCP and PPPoE). And you may remotely visit the NVR through domain name (<http://domain name: HTTP port No.>). When visiting NVR by using DDNS, user should make sure port and current IP can be normally connected in public network. Details settings, including server address, host, user, and password, should be consistent with NVR local setting.

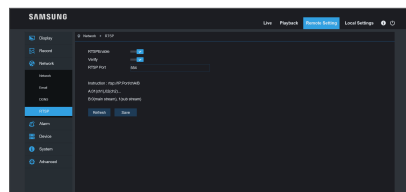


## RTSP

Go to “Main Menu” → “Parameter” → “Network” → “RTSP”. Set User Name and Password to view video by PC software VLC

- **RTSP Enable:** Enable/Disable
- **Verify:** Enable/Disable
- **RTSP Port:** 554
- **Instruction:rtsp:** //IP:Port/chA/B
- **A:** 01(ch1), 02(ch2)...
- **B:** 0(main stream),1(sub stream)

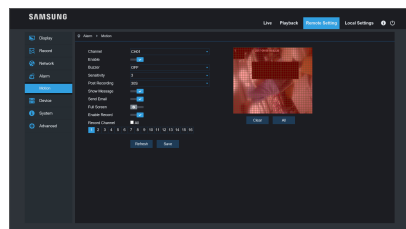
 ■ User name and password of RTSP is same as system.



## Alarm

### Motion Detection

Configure Sensitivity, Motion Record, etc. Detailed setting should be consistent with NVR local setting.

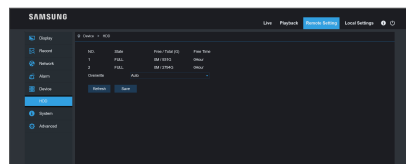


## Device

Click <Device> to unfold its sub-options: HDD.

### HDD

User may check HDD status of NVR and overwritten time. Detail setting should be consistent with NVR local setting.



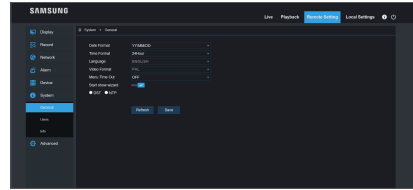
# Web Application Manager

## System

Click <System> option to unfold its sub-options: General, Users and information.

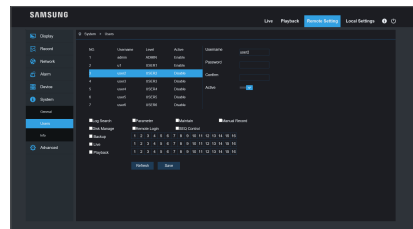
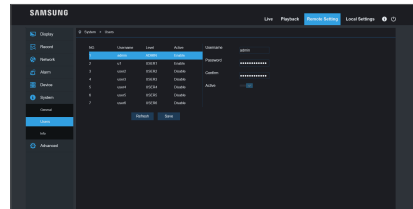
### General

User may check NVR language and video system and set system time, date format, menu display time, DST and NTP parameters. Detailed setting should be consistent with NVR local setting.



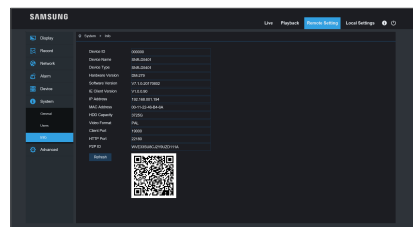
### Users

User may configure user name and password. Detailed setting should be consistent with NVR local setting.



### Info

User can view system information, including Device ID, Device Name, Device Type, Hardware Version, Software Version, IE Client Version, IP Address/ Domain, MAC Address, HDD Capacity, Video Format, Media Port, Web Port, P2P ID, etc.

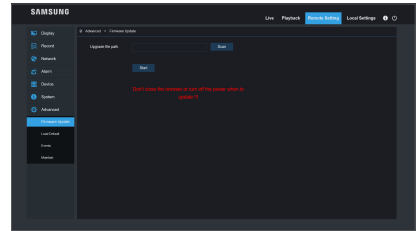


## Advanced

Click Advance to unfold its sub-options: Firmware Update, Load default, Events and Maintain.

### Firmware Update

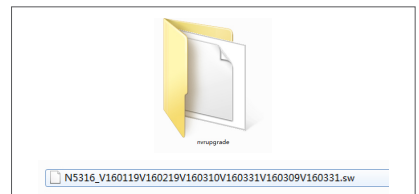
User may remotely update NVR system.



### Updating procedure

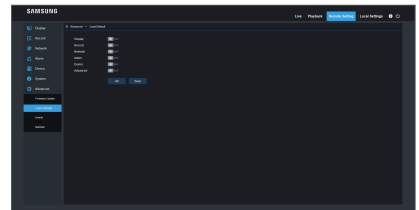
Firstly, select the update file path. The file format is \*.sw.  
Secondly, click "Start" to start updating. The updating progress can be seen on the screen. After firmware is upgraded, please restart the browser and enter IP address and HTTP port of the NVR to log in remotely.

-  Before clicking on Start, be sure to exit from the menu.



### Load Default

User may remotely restore default parameters of NVR, with same setting method as that of NVR.

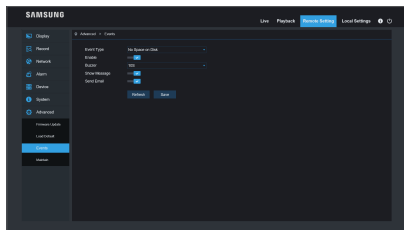


# Web Application Manager

---

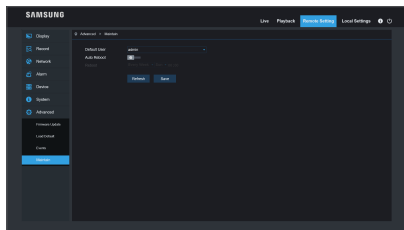
## Events

User may configure Event Type, Buzzer, Send Email, Show Message and other parameters. Detailed setting should be consistent with NVR local setting.



## Maintain

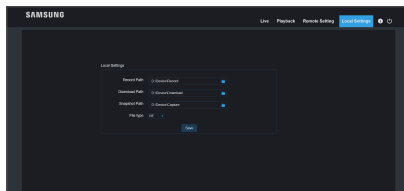
Allow you remotely set auto maintain time for NVR. Detailed setting should be consistent with NVR local setting.



## Local Setting


---

User may set Record Path (save Live record and Playback clip file), Download Path for remote file, Snapshot Path for captured pictures, Interval for switching record files (Packaging time), and File type (RF, AVI and MP4)



## Logout

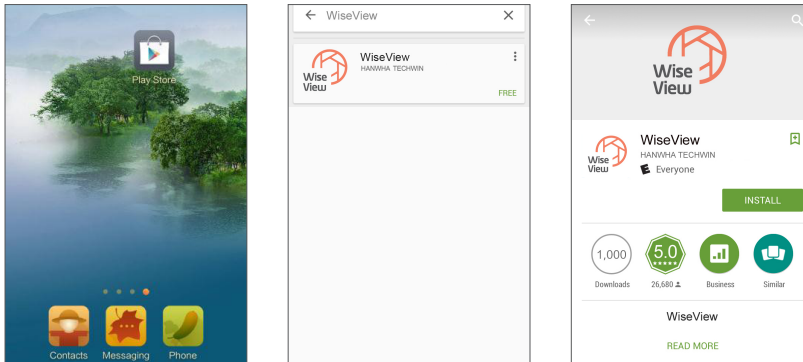
---

Click [  ] to log out and return to the Login interface.

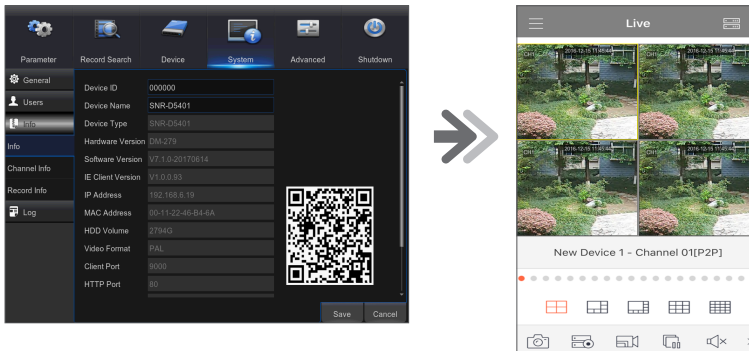
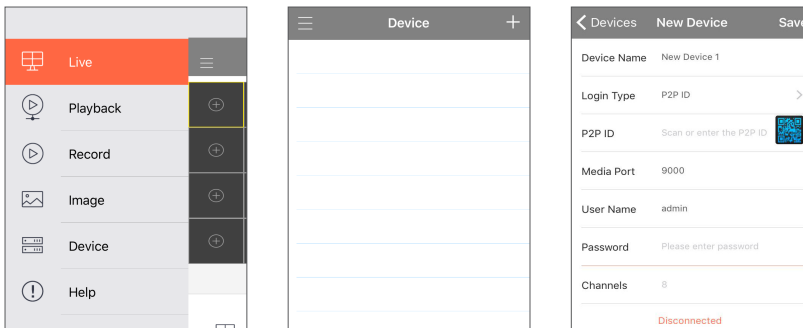
# Mobile App

## ANDROID PHONES/TABLETS

1. Open Play Store to search WiseView and click 'INSTALL' to install.



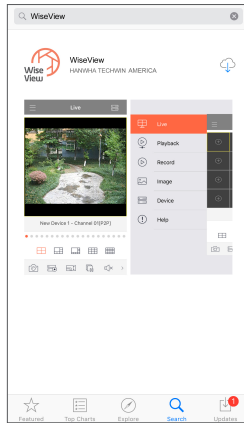
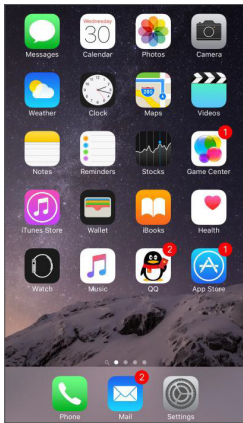
2. After installation, open WiseView and select 'Device'. Then click [ + ] to add new device. Scan QR code under Information page of system on local NVR. Then input client port, user name and password, and then click Save to log in the device.



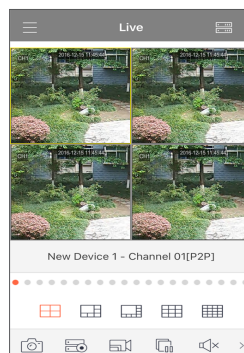
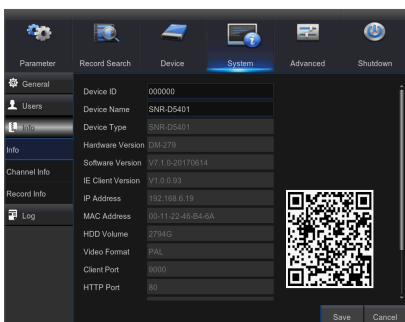
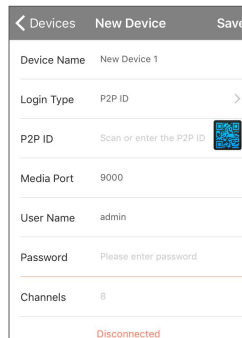
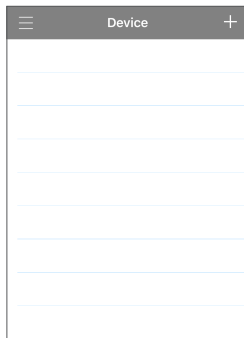
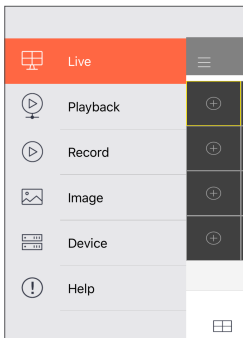
# Mobile App

## IPHONE/IPAD

1. Open App Store to search WiseView, and click icon [📥] to install.



2. Open WiseView, and go to Device. Click [⊕] to add new device. Scan QR code under Information page of system on local NVR. Then input client port, user name and password, and then click Save to log in to the device.





## TROUBLESHOOTING

Symptom	Countermeasures
What can I do if the system does not detect the HDD?	<ul style="list-style-type: none"> <li>Check if the power supply system is properly connected and data cord and power cables are securely connected, and if something wrong with the HDD interface. Or you may check if your HDD is supported by referring to the specifications or descriptions.</li> </ul>
I have changed the password but forget the new password, how can I access the system?	<ul style="list-style-type: none"> <li>If you forget system password, please consult with our technical personnel. We strongly suggest user to set password easy to be remembered and relatively safe. If you have safety requirement, please do not set very simply password, such as 000000. Password MUST be 8~13 characters long, and the combination of two kinds of characters at least.</li> </ul>
We see abnormal video signal or even no video signal by connecting the NVR and camera together. Power supply for both devices is OK. What is wrong?	<ul style="list-style-type: none"> <li>Check network cable at NVR side to see if the cable is firmly connected and if it is worn out and needs to be replaced.</li> </ul>
How to prevent NVR from being influenced by heat?	<ul style="list-style-type: none"> <li>The NVR needs to dissipate heat while it is running. Please place the NVR in a place with good air circulation and away from heat sources to ensure stability and life of the NVR.</li> </ul>
The remote controller doesn't work while the monitor screen is OK and panel keys are functional. Why?	<ul style="list-style-type: none"> <li>Operate again by aiming the remote controller at the IR receiver on front panel. If it still doesn't work, please check if the batteries in the remote controller are dying. If not, check if the remote controller is broken.</li> </ul>
I want to take out HDD from my PC and install it in NVR. Can it work?	<ul style="list-style-type: none"> <li>All HDDs supported by the system can be used. But remember, once NVR runs, the data on your HDD will be lost.</li> </ul>
Can I playback while recording?	<ul style="list-style-type: none"> <li>Yes. The system supports the function of playing while recording.</li> </ul>
Can I clear some records on HDD of NVR?	<ul style="list-style-type: none"> <li>In consideration of the file security, you may not clear part of records. If you want to remove all the records, you can format HDD.</li> </ul>
Why can't I log in NVR client?	<ul style="list-style-type: none"> <li>Please check if the network connection settings are correct and RJ-45 port is with good contact. And check if your account and password are correctly input.</li> </ul>
Why can't I find any records during playback?	<ul style="list-style-type: none"> <li>Please check if the data line connection for HDD is OK and system time is properly adjusted. Try a few times and restart. If it still doesn't work, check if the HDD is broken.</li> </ul>
Why doesn't dynamic detection work?	<ul style="list-style-type: none"> <li>Please check if the motion detection alarm setting at IPC side is correct. Confirm if motion is enabled, motion area is set up, and motion sensitivity level is too low.</li> </ul>
Why does buzzer keep alarming?	<ul style="list-style-type: none"> <li>Please check the alarm setting, check if motion detection function is enabled and object motion is detected all the time. Besides, refer to corresponding HDD alarm setting.</li> </ul>
Why can't I stop recording by pressing "STOP" button or click "Stop Recording" in context menu?	<ul style="list-style-type: none"> <li>Pressing Stop button can only stop manual record. If you want to stop Scheduled recording in certain time quantum, please change the setting to No Record. To stop Startup recording, please change record mode to scheduled recording or manual recording. Then you may stop recording by the prescribed methods. And another way of stopping recording is to set channel in record setting as Off.</li> </ul>

# Appendix

---

## Usage Maintenance

1. To shut down NVR, please firstly shut down the system and then turn off the power. Do not turn off the power directly or HDD data will be lost or damaged.
2. Please keep NVR away from heat sources or places.
3. Clean the internal dust regularly. Make sure the good ventilation of NVR so as to ensure the good heat dissipation.
4. Please do not hot plugging cables at ports, or the ports may be damaged.
5. Please check the HDD cable and data cable regularly to see if they are ageing.
6. Please prevent the audio and video signals of NVR from being intervened by other electronic devices, and prevent the HDD from being damaged by static electricity and induced voltage.
7. If the network cable is frequently plugged, it is suggested to replace connecting line regularly, or the input signal may be unstable.  
This is A class product.it maybe bring wireless interference in life. Under this situation, it need user to make measures.

## SPECIFICATIONS

### CAMERA - SNC-4241BE

Item	Details	
<b>Video</b>		
Imaging Device	4M CMOS (1/3")	
Effective Pixels	2592x1520	
Scanning System	Progressive	
Synchronization	Internal	
Horizontal Resolution	1520	
Min. Illumination	0.62Lux (30IRE);1.28Lux (45IRE) In Color Mode	
Camera Output	RJ45	
<b>Lens</b>		
Focal Length	3.6mm	
Max. Aperture Ratio	F2.1	
Angular Field of View(H / V / D)	D:94°/H:77.5°/V:43.4°	
<b>Operational</b>		
Shutter Mode	Auto	
Gain Control	Auto	
White Balance	Auto	
Wide Dynamic Range	YES	
Digital Noise Reduction	3DNR	
OSD	N/A	
Refresh Rate	50/60Hz	
Day & Night	Color ,Black White , Auto	
IR Distance	82ft(Total darkness)/130ft(Ambient lighting)	
<b>Environmental</b>		
Operating Temperature / Humidity	-10°C ~ +50°C (+14°F ~ +129°F) / Less than 90% RH	
Ingress Protection	IP66	
<b>Electrical</b>		
Input Voltage	POE/12VDC	
Power Consumption	5W(DC 12POWER),7W(PoE POWER)	
<b>Mechanical</b>		
Color / Material	White /Metal	
Dimension (WxHxD)	Ø68x149mm(2.68" x 5.87")	
Weight	361g	
ETC	Bracket	one body (assembled)
	Screw	3 EA (per 1 Cam)
	Anchor	3 EA (per 1 Cam)

# Appendix

## NVR - SNR-D5401

Item		Details
<b>Description</b>		
Video	Inputs	16CH
	Resolution	4M / 3M / 1080P/720P
Live	Frame rate	4M@240fps, 3M@330fps, 1080P@480fps
	Resolution	1,024x768, 1,280x720, 1,280x1,024, 1,440x900, 1,920x1,080, 2,560x1,440, 3,840x2,160
	Multi Screen display	[Local Monitor] 1/4/6/8/9/10/12/13/14/16 Sequence [Web] 1/4/6/8/9/10/12/13/14/16 Sequence
<b>Performance</b>		
Operating System	Embedded	Linux
	Installation wizard	Support
Recording	Compression	H.264 / H.265
	Recording bandwidth	Up to 320Mbps
	Recording Resolution	4M@320fps, 3M@480fps, 1080P@480fps
	Mode	Manual, Schedule (Continuous/Event), Event(Pre/Post)
	Event	Motion(Sensitivity Level 1~8)
	Overwrite modes	Disable/Auto
	Pre-Alarm	On/off
Post-Alarm	Up to 5min (30 sec, 1, 2, 5min)	
Search & Playback	Search mode	Date/time, Normal, Motion
	Playback function	Fast forward / backward (2x, 4x, 8x, 16x) Slow forward(1/2x, 1/4x, 1/8x, 1/16x) Step Forward (All above is only available on the NVR itself rather than website)
Network (IPv4)	Live stream	Depends on Mainstream and Substream set on local NVR Mainstream:Max.4MP 20fps Substream:Max.720P(1280x720)/VGA(640x480)/QVGA(320x240) 480fps
	Max. scan channel	64CH
	Protocol support	TCP/IP, UDP/IP, RTP(UDP), RTP(TCP), RTSP, NTP, HTTP, DHCP, PPPoE, SMTP, DNS, DDNS, uPnP
	Monitoring	Webviewer, Mobile Viewer

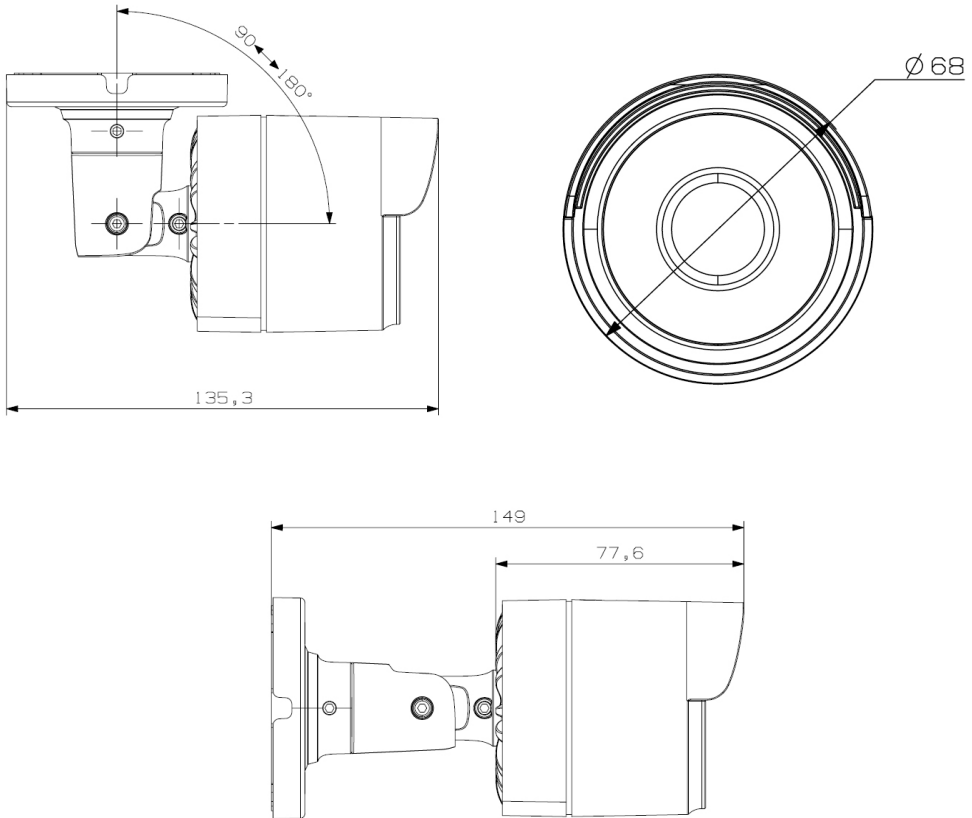
Item		Details
Smart phone	Web / App viewer	Microsoft Internet Explorer (Ver. 8~11), Mozilla Firefox (Ver. 51.x or lower), Google Chrome (Ver.44.x or lower), Apple Safari (Ver. 5.1 or higher) (Mac OS X 10.9 or higher)
	Protocol support	TCP/IP, UDP/IP, UDP, P2P
	Transmission speed	VGA(640x480), QVGA(320x240) Max.20fps (Single channel)
	Max. scan channel	64CH
Storage	Internal HDD	1 SATA HDD (3TB)
	USB (Back-up)	3 USB Ports (USB 2.0 x 2EA, USB 3.0 x 1EA)
	File Format (Back-up)	AVI, MP4, RF (RF means H.264 or H.265.)
Security	Password Protection	1 Admin and 6 Users
		User access log, Encryption
<b>Interface</b>		
Monitors	VGA	1 VGA
	HDMI	1 HDMI
	Simultaneous Output	VGA and HDMI
Audio	Inputs/Output	N/A
	Compression	N/A
	Sampling Rate	N/A
Alarm	Remote notification	Notification via e-mail
Connections	Ethernet	1 WAN RJ45 10/100/1000M Base-T / 16 LAN
	USB	3 USB Ports (USB 2.0 x 2EA, USB 3.0 x 1EA)
	Application Support	Mouse, Remote Control
<b>General</b>		
Electrical	Input Voltage	AC 100-240V
	Power consumption	20W(1*HDD), PSE : Total 130W (Average 8.1W per each PoE port)
Environmental	Operating Temperature/ Humidity	0°C~+40°C (32°F ~ 104°F) / 20% ~ 85%RH
Mechanical	Dimension (WxHxD)	378*323.5*51mm(14.9" *12.8" *2")
	Weight (With hard disks)	3.64kg
OSD Language		English, French, Spanish
<b>Mechanical / Package information</b>		
Color / Material		Black / Metal

# Appendix

## DIMENSION

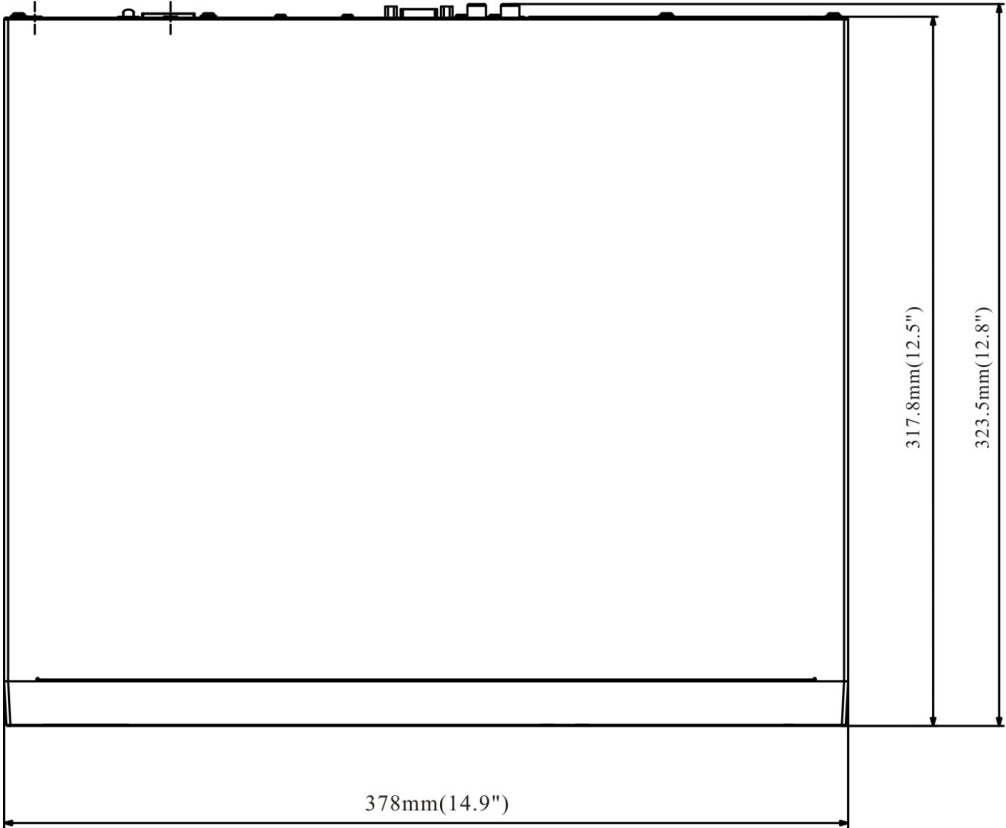
### CAMERA

Unit: mm (inch)



NVR

Unit: mm (inch)





Hanwha Techwin cares for the environment at all product manufacturing stages, and is taking measures to provide customers with more environmentally friendly products. The Eco mark represents Hanwha Techwin's devotion to creating environmentally friendly products, and indicates that the product satisfies the EU RoHS Directive.



### **Correct Disposal of This Product** (Waste Electrical & Electronic Equipment)

(Applicable in the European Union and other European countries with separate collection systems)

This marking on the product, accessories or literature indicates that the product and its electronic accessories (e.g. charger, headset, USB cable) should not be disposed of with other household waste at the end of their working life. To prevent possible harm to the environment or human health from uncontrolled waste disposal, please separate these items from other types of waste and recycle them responsibly to promote the sustainable reuse of material resources.

Household users should contact either the retailer where they purchased this product, or their local government office, for details of where and how they can take these items for environmentally safe recycling.

Business users should contact their supplier and check the terms and conditions of the purchase contract. This product and its electronic accessories should not be mixed with other commercial wastes for disposal.



### **Correct disposal of batteries in this product**

(Applicable in the European Union and other European countries with separate battery return systems.)

This marking on the battery, manual or packaging indicates that the batteries in this product should not be disposed of with other household waste at the end of their working life. Where marked, the chemical symbols Hg, Cd or Pb indicate that the battery contains mercury, cadmium or lead above the reference levels in EC Directive 2006/66. If batteries are not properly disposed of, these substances can cause harm to human health or the environment.

To protect natural resources and to promote material reuse, please separate batteries from other types of waste and recycle them through your local, free battery return system.



---

### **Head Office**

6, Pangyo-ro 319 beon-gil, Bundang-gu, Seongnam-si,  
Gyeonggi-do, 463-400 Rep. of KOREA  
Tel : +82.70.7147.8753 Fax : +82.31.8018.3740  
[www.hanwha-security.com](http://www.hanwha-security.com)

---

### **Hanwha Techwin America**

500 Frank W. Burr Blvd. Suite 43 Teaneck, NJ 07666  
Toll Free +1.877.213.1222 Direct +1.201.325.6920  
Fax +1.201.373.0124  
[www.hanwha-security.com](http://www.hanwha-security.com)

---

### **Hanwha Techwin Europe**

Heriot House, Heriot Road, Chertsey, Surrey, KT16 9DT, United Kingdom  
Tel +44.1932.57.8100 Fax +44.1932.57.8101  
[www.hanwha-security.eu](http://www.hanwha-security.eu)

---