

# Quick Start Guide

## ALL-IN-ONE SECURITY SYSTEM

Thank you for purchasing the NVR Security System.  
Follow the simple steps in this guide to set up and start using your new security system.



If you have any questions or need help installing your new product, please contact our free technical support.

US:  
Telephone: +1 844 WISENET (844-947-3638)  
6am - 6pm PST (7 days a week)  
e-mail: [cs@wisenetlife.com](mailto:cs@wisenetlife.com)  
Web: [www.wisenetlife.com](http://www.wisenetlife.com)

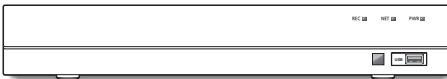
Europe:  
Telephone #1: 00800-8010-8022  
Telephone #2: +31-(0)13-5792-790  
8am - 4pm CET, Monday - Friday (5 days a week)  
e-mail: [HTService@hanwha.com](mailto:HTService@hanwha.com)  
Web: [www.wisenetlife.com](http://www.wisenetlife.com)

Australia:  
Telephone: 1800-665-397 (Australia) or  
09-363-7877 (New Zealand)  
9:00AM - 5:00PM Australian Eastern  
Web: [www.wisenetlife.com](http://www.wisenetlife.com)

### CAUTION!

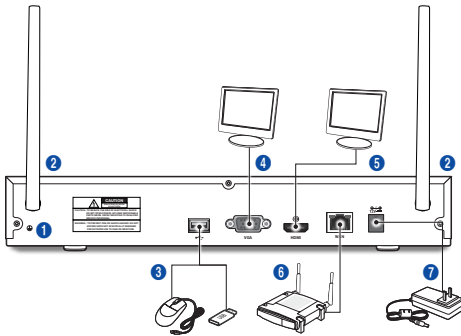
- The transmission range of the wireless signal may weaken if heavy obstructions, such as concrete, brick, or metal walls are between the NVR and cameras.
- If there are multiple Wi-Fi routers and devices in your environment, it may reduce the wireless bandwidth available. Weak network bandwidth may reduce the videoquality or video loss.

### □ Front



### □ Back


- The appearance of power adaptor differs depending on sales region.

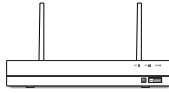


Part Name	Function
1 Ground connection	A terminal to connect a separate ground cable. <ul style="list-style-type: none"> <li>■ Make sure to add a ground cable in order to use the equipment safely.</li> </ul>
2 Antenna	Receive signal from wireless camera.
3 USB port	Connect with USB.
4 VGA port	Connect with VGA display devices, such as PC monitor.
5 HDMI	Connect with HDMI display devices, such as PC monitor.
6 WAN: (RJ45) Network port	Connect with WAN, Ethernet cable.
7 Power port	Connect with the power supply DC12V 2A, included with the device

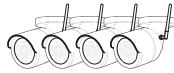
## Package Contents

Please unwrap the product, and place the product on a flat place or in the place to be installed. Please check the following contents are included in addition to the main unit.

-  The appearance of the components may differ from the image shown.
- Accessory category and quantity may differ depending on sales region.



SNR-73201W



SNC-79441BW



45ft Power Extension Cable



Network Cable



HDMI Cable



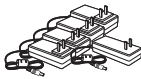
Remote Control /  
Remote Control Battery (AAA x 2)



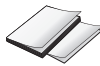
Mouse



Hex Key x 1EA (per Camera) /  
Screw x 3EA (per Camera) /  
Anchor x 3EA (per Camera)

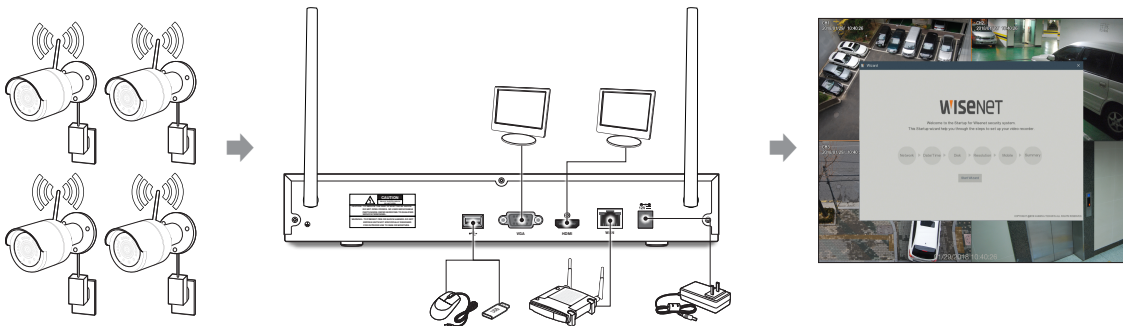


12V 2A Adapter for NVR /  
12V 0.5A Adapter for 4 Cameras



Printed Material

## Getting Started

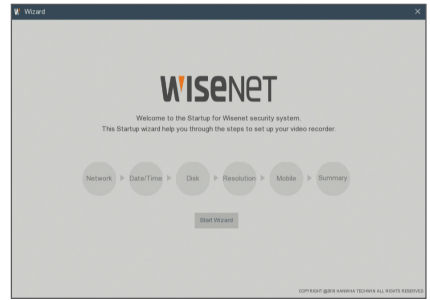


- (1) Install the cameras on the walls and connect the power adapters to each camera.
- (2) Plug in the NVR power adapter and connect the NVR to your Wi-Fi router.
- (3) When the NVR is powered on, it will automatically start the pairing process with the cameras. Once the process is complete, the NVR will display live video feeds from your cameras and then start recording.
- (4) You will briefly see a live video on display before you start the Startup Wizard.
- (5) To configure advanced settings for device, please follow the Startup Wizard instructions to complete installation as shown below.

# Startup Wizard

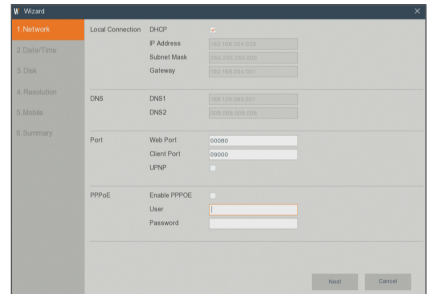
After NVR startup is completed, the startup wizard will be displayed. Wizard setting menu includes:

- Network setup
- Date/Time setup
- Disk setup
- Resolution setup
- Mobile access
- System Summary



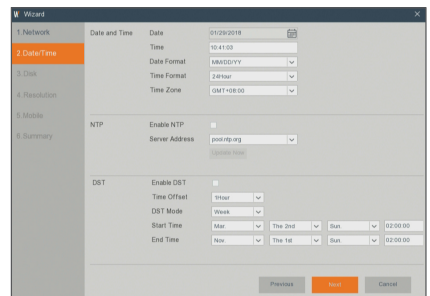
## 1. Network

In DHCP mode the router will automatically assign an IP address to NVR. If the NVR fails to obtain an IP address, refer to the NVR Router Guide. If the problem still cannot be resolved, contact technical support.



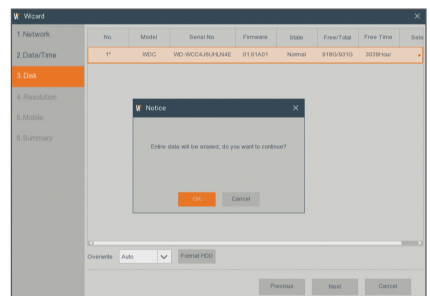
## 2. Date/Time

Set the date, time, NTP, DST.



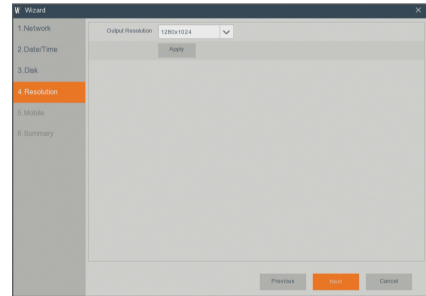
## 3. Disk

New hard drive(s) connected must be formatted before use. Upon connection, it will indicate to format new hard drive. Click on "Select" to select the unformatted hard drive. Click on "Format HDD" to pop up the user login window and enter the password to log in. A notice window will indicate "Entire Data Will Be Erased. do You Want To Continue?". Click "OK" to format the disk. When the progress bar is complete, the formatting process is completed.



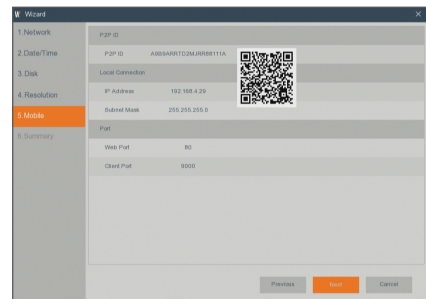
#### 4. Resolution

For VGA output or HDMI output, the optional resolution includes 1024×768, 1280×1024, 1440×900, 1280×720, 1920×1080



#### 5. Mobile

If you scan a QR code using WiseView, the device ID displayed in the NVR will be automatically reflected in the Mobile Viewer ID, and you can use the Mobile Viewer immediately by entering the ID/password of the NVR.



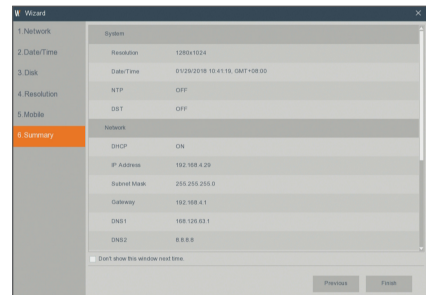
#### 6. Summary

Shows system and network status of NVR.

#### 7. Click on "Finish" to finish setting of startup wizard.



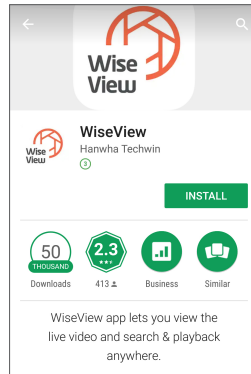
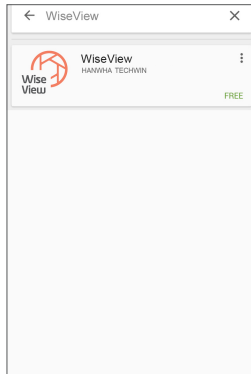
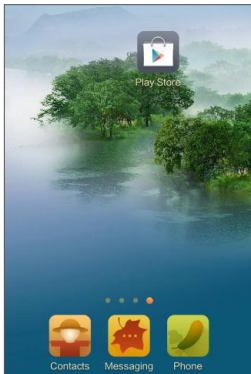
- You can click on "Don't show this window next time" if you do not wish to have the wizard setting to appear next time.



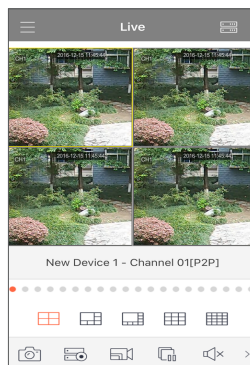
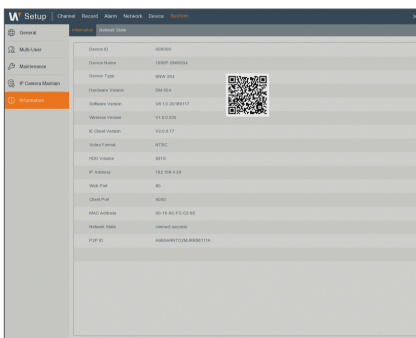
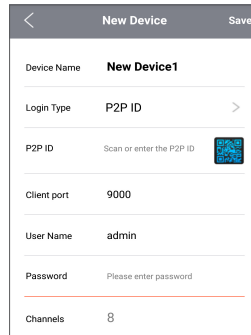
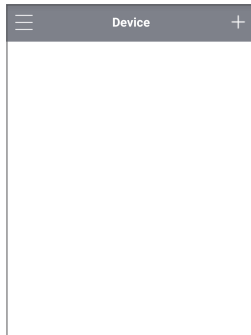
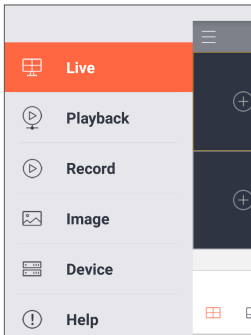
# Mobile App

## Android Phones/Tablets

1. Open Play Store to search for WiseView and click "INSTALL".

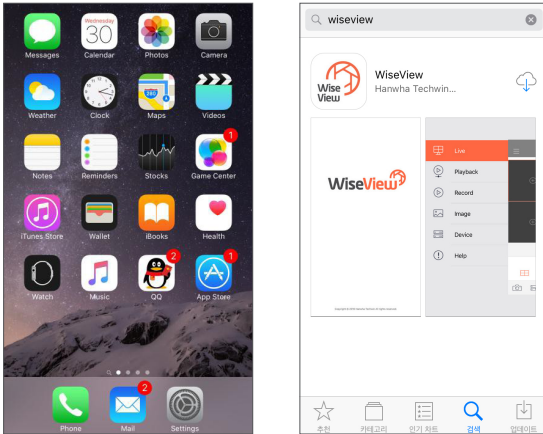


2. After installation, open WiseView and select "Device". Then click [ + ] to add new device. Scan QR code under Information page. Then input client port, user name and password, and then click Save to log into the NVR.

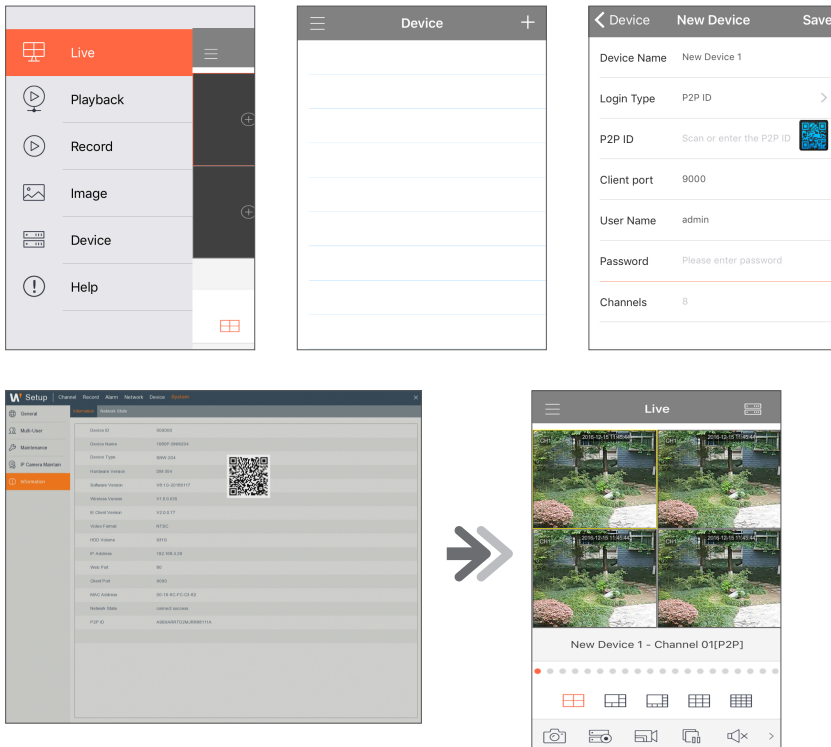


## □ iPhone/iPad

1. Open App Store to search for WiseView, and click icon [  ] to install.



2. Open WiseView, and go to Device. Click [  ] to add new device. Scan QR code under Information page. Then input client port, user name and password, and then click Save to log into the NVR.



# Registering with DDNS

## To register your product with the Wisenet DDNS

1. Visit the Wisenet DDNS web site (<http://ddns.hanwha-security.com>) and sign in with a registered account.

2. From the top menu bar, select <MY DDNS>.



3. Click the [Register Product] tab.

4. Select DDNS button.

5. Enter the product ID.

6. Select a <Type> and specify the <Model>.

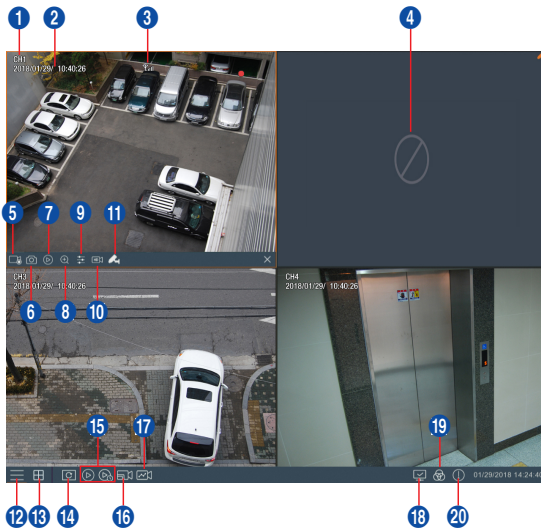
7. Specify the product location with a description if necessary.

8. Click [Product Registration].  
The product will be added to the product list that you can check.

No.	Product ID	Model	Connection Status	Product Management	View	Video Tagging
1	WEB1021		ON	CFG Update	View >	
2	CAMERA1021		OFF	CFG Update	View >	

## □ Main Interface

In real-time preview mode: right click on any area to access the desired menu. Right click on it to open a context menu. Menu items may vary depending on the condition, such as sign-in, sign-out, split screen mode and various operation conditions. Left click on any channel to access shortcut menu. Image capture, recording and image zoom-in are in this section.



The video recording marks are shown below

● : means common Recording.

🚶 : means Motion detection recording.

Component Name	Function
① Channel Name	Display channel name
② Date & Time	Display current date and time
③ The signal icon	The level of the signal, strong or weak.
④ Video Loss	Wireless Camera is off-line.
⑤ Manual Recording	Enable or disable manual recording
⑥ Manual Capture	Make a snapshot of current video
⑦ Instant Playback	Playback of the last five minutes of the video
⑧ Zoom	Hold and drag mouse cursor to select a frame of current video to zoom in.
⑨ Color Setting	Set hue, brightness, contrast and saturation of current channel.
⑩ Stream Switch	Mainstream or Substream optional.
⑪ Pair	Do the pairing of camera and NVR.
⑫ Main Menu	Access the main menu
⑬ 4-Channel Layout	Display four channels of video.
⑭ Auto SEQ	Press this button to switch the screen mode in sequence.



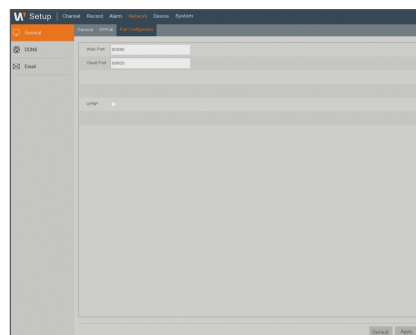
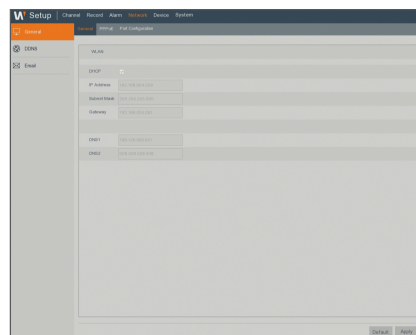
Component Name	Function
15 Play	Replay video recorded
16 Stream Switch	HD or SD optional.
17 Preview Policy	Realtime: There is no delay of video, but it is not that smooth.
	Smooth: There may be some delay of video, but it is smooth.
	Balanced: Take both realtime and smooth into consideration at the same time.
18 Connection state	Displays the network connection status.
19 Manual mode	Sets manual recording mode.
20 System	System Information.

## Network Settings

- **DNS:** DNS is usually provided by local ISP. Enter the IP address of your domain name server.
- **UPnP (Plug and Play):** function of automatic upload from port. It is important that UPnP function be available on the router and should be enabled before use. When UPnP is enabled, port does not need to be mapped on router.
- **Tips:** When settings are confirmed and saved, they will be applied after the "OK" button is clicked.

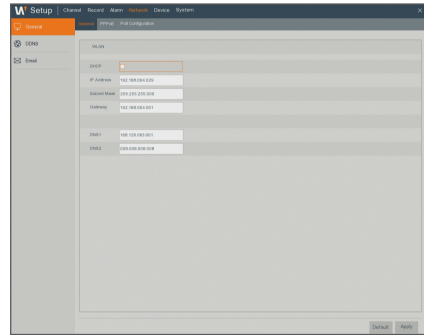
1. When selecting DHCP, router will allocate IP address to the NVR automatically, and the IP address allocated to NVR varies upon each start of the NVR or DHCP server, so the corresponding IP address and port number shall be confirmed and mapped prior to remote access to the NVR each time. The operation procedure is as shown below:

- 1 Select DHCP and then click on Save.  
Enter client port and Web port (they must be different from each other).
- 2 Set the IP address obtained by NVR on router and the port set for mapping, as detailed in router setting.
- 3 Use the IP address to perform remote access to NVR:  
http://IP in public network: Web port (e.g. 80)  
http://IP in intranet: Web port (e.g. 80) (available only in one LAN)



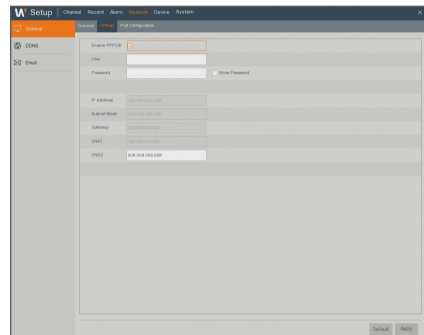
2. When choosing Static, you have to set IP address, subnet mask, gateway and port number. The operation procedure is as shown below:

- 1 Deselect DHCP.
- 2 Set port (client port), which shall be mapped on router.
- 3 Enter Web port (which must be different from client port), which shall be mapped on router.
- 4 Enter the specified IP address to this bar, which will become the unique NVR address code in regional network, for example, 192.168.2.128 as shown below.
- 5 Subnet mask: view the router to set a same mask as that in it, or consult your network operator.
- 6 DNS: Enter DNS (domain name server) address. View the router to set the same gateway as that , or consult your network operator.
- 7 Click on "Apply" to save changes.



3. Select PPPoE for direct dial-up in the following procedure:

- 1 Enter Client port.
- 2 Enter Web port (which must be different from Client port).
- 3 Enter user name and password for PPPoE, which are provided by network operator.
- 4 Enter DNS (domain name server) address.
- 5 Click on "Save" to exit and restart it, and then the NVR will obtain an IP address.
- 6 Perform remote access to the NVR by using the IP address followed by port number (IP: Web port number).

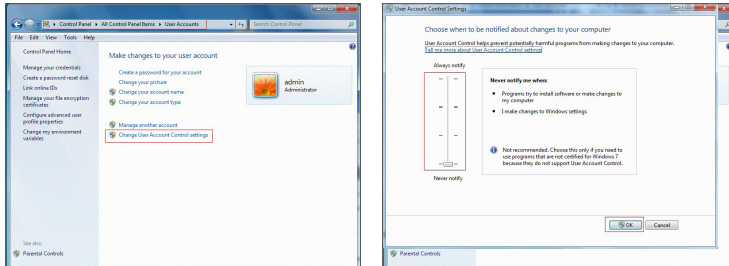


# Web Application Manager

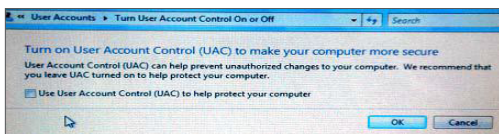
## Download and Installation of Plugin.

If you are using Windows 7, you may need to setup the user authority for remote control, or you may be unable to backup or record.  
Vista System: Start → Setup → Control Panel. Set user authority in control panel as shown below.  
Remove the check mark "√" in front of "Use UAC to help protect your computer" and click "OK".

### WIN7



### Vista

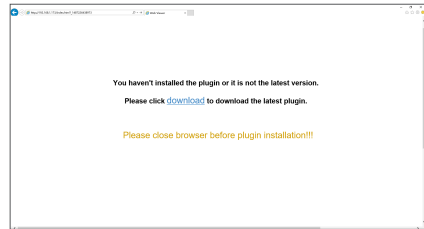


- If the plugin is not downloaded successfully, please check if your browser's safety level or firewall setting is set too high. Please open IE browser → [Menu Bar] Tools → Internet options → Security → Internet → Custom level → Enable the options.

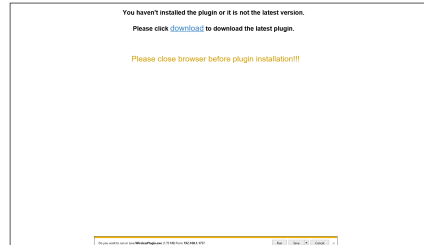


## Download and installation of plugin for IE

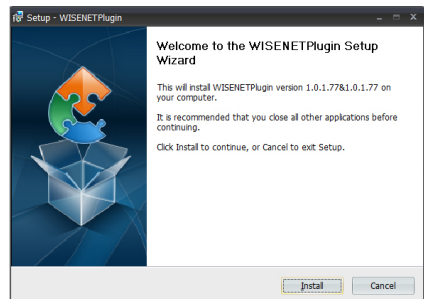
Enter IP address plus Web port of the NVR in the address bar of IE, for example, <http://192.168.2.173:80>.



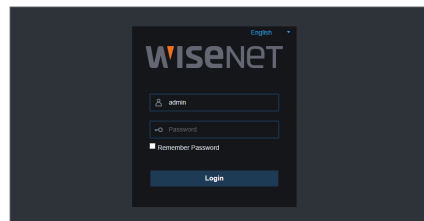
Click "Download" and then "Run" to begin downloading the file.



Click on "Install" in the "WISENETPlugin" dialog box.

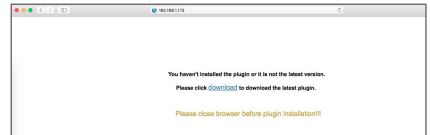


Close your IE browser and restart it. Enter IP address plus Web port of the NVR in address bar to access the login page.

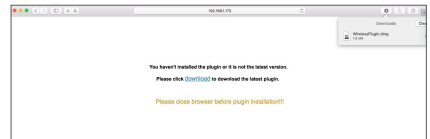


## Download and installation of plugin for Mac SAFARI

Enter the IP address and Web port for the NVR in the address bar of Mac SAFARI browser. For example, <http://192.168.2.173:80>, and click on "Download" to download the plugin.



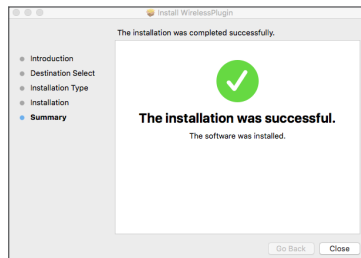
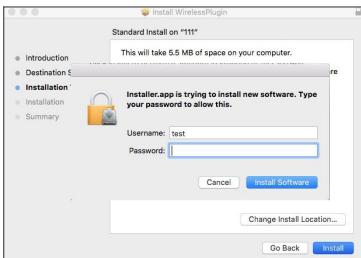
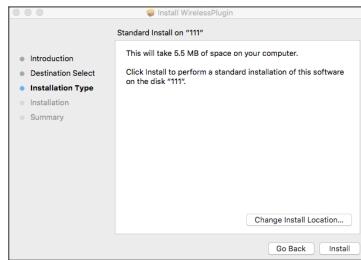
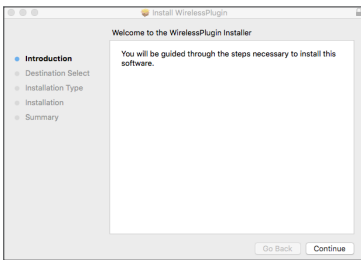
Locate the downloaded plugin "WirelessPlugin.dmg" and double click on it.



Install the plugin by double clicking on "WirelessPlugin.pkg".

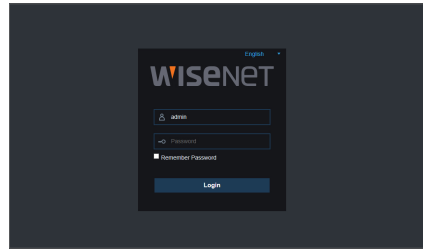


Click on "Continue" > "Install". Enter user name and password for login to your Mac. Click on "Install" > "Close" to finish installation.



Close your Mac Safari browser and restart it. Enter the IP address and Web port for the NVR in the address bar to access login page.

- The above instruction is to install the initial plugin. You can use the same plugin for IE and Firefox. If plugin for windows OS was installed on IE, Firefox once, you can use IE which needs to be run as administrator, Firefox to log in to NVR.

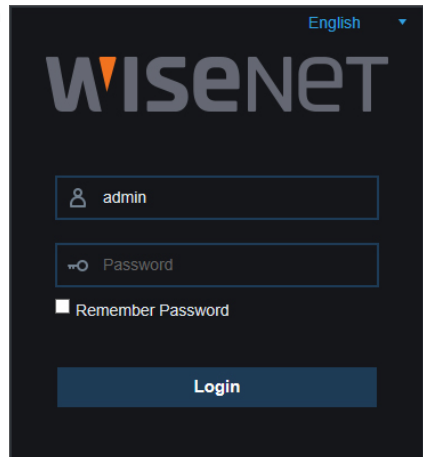


When you download and install plugin on Firefox, please close Firefox when it is prompted to. After installation is finished, you can restart Firefox to log in to the NVR.

When you do a firmware upgrade, please close the browsers in order to have the new plugin replace the old one. Depending on your situation, the plugin may not be work on your browser. In this case, please install the plugin unavailable on the CD provided. (WirelessPlugin\_Windows\_YYYY\_MM\_DD.exe for Windows system, and WirelessPlugin\_Mac\_YYYY\_MM\_DD.dmg for Mac).

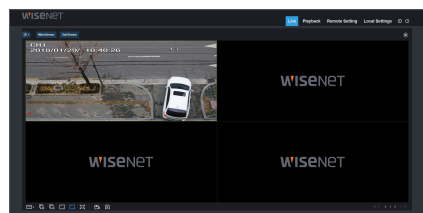
### ❑ Web Application Manager Login

After plugin installation, please enter user name and password, select Main Stream or Sub Stream (In general, select main stream for intranet and sub stream for extranet), and select language in the interface. There is an option for opening all channel preview, select it to open all live pictures. Click Login to log in remotely view the NVR.



### ❑ Live Interface

Log in and go to live view.



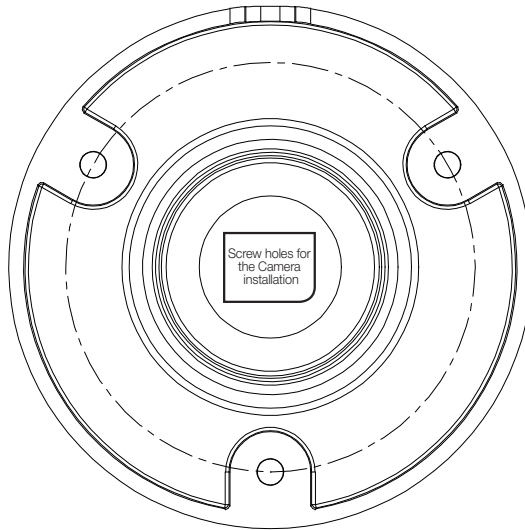


## Camera Installation Template - SNC-79441BW

To make camera installation easier, you can tear off this page and adhere it to the place you would like to install your cameras.

# TEMPLATE

This template is used to install the camera on the wall



**CAMERA FRONT**

