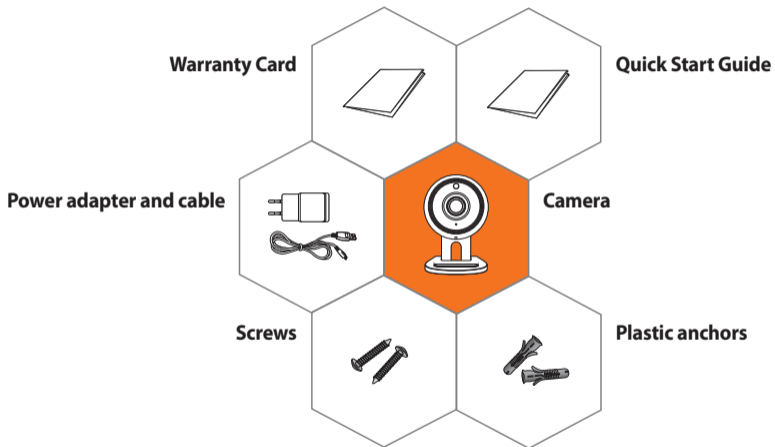


**SAMSUNG**  
WISeNET

# WISeNET SMARTCAM

Quick Start Guide

# What's in the box



※ Adapter may be different upon the destinations.

# System Requirements



- ✓ **Wi-Fi 802.11 b/g/n**
- ✓ **Recommended : 3.5Mbps or higher**

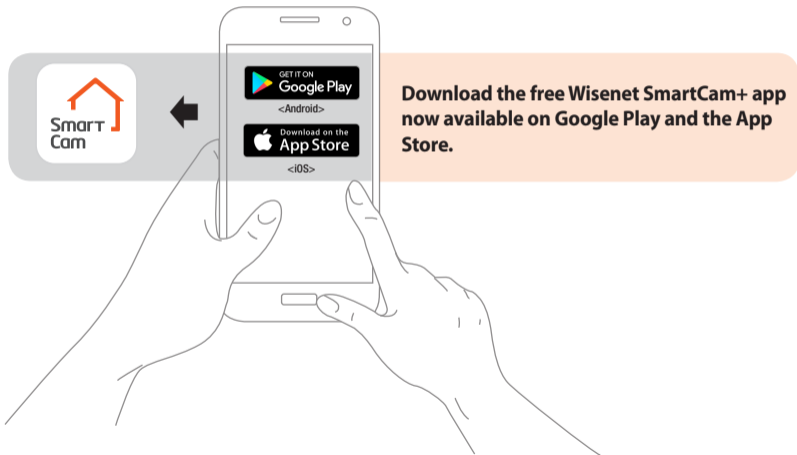


- ✓ **iOS 8 or higher**
- ✓ **Android OS 5.0 or higher**

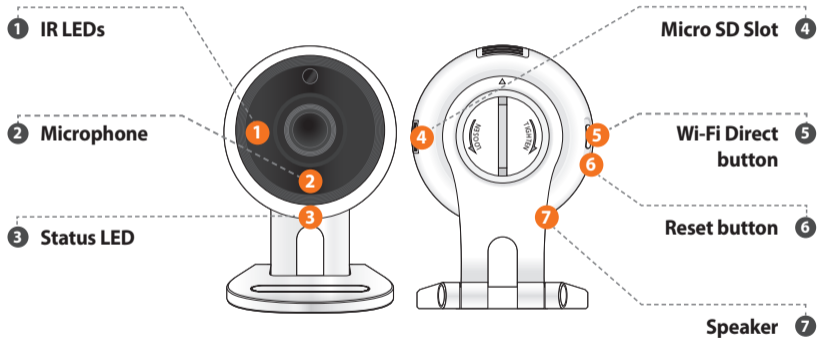


- ✓ **Windows 7/8 or higher**
- ✓ **Mac 10.7 or higher**

# Mobile Application

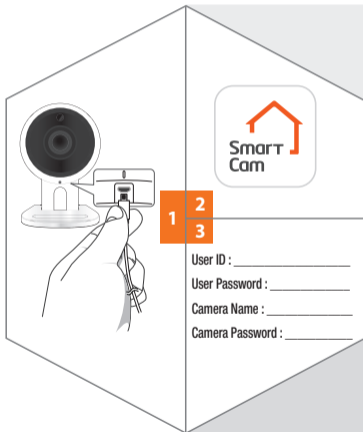


# Camera Overview



# Camera setup and registration

**Plug-in the power adapter to the wall and connect the camera as shown.**



**Open the Wisenet SmartCam+ app and create an account. Follow the on-screen instructions to register.**

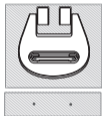
**Save your Account and Device information here.**

# Mounting the Camera

Remove the rubber packing from bracket.



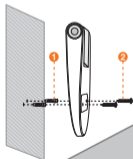
Mark the positions of the screw holes on where the camera is to be mounted.



Drill the holes about 1.2 inches deep into the wall.  
(Recommended Drill Bit size 0.2 inches)

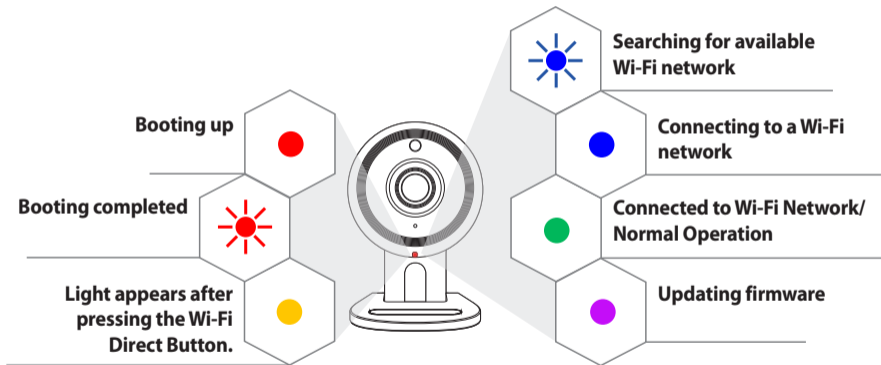


1 2  
3 4



① Insert the anchor in the hole completely and  
② tighten the bracket with screw.

# LED Status Guide







**SAMSUNG**  
wiSeNET