

How to Stream your Wisenet Video Security System

Most security systems are located in the home office, garage, basement, or attic. Instead of accessing the video stream in an inconvenient location, you can monitor your home in the comfort of your living room sofa. Stream your security cameras using a Google Assistant-enabled device and Chromecast or a TV with Chromecast built-in.

What You Need to Get Started

- A Google Assistant compatible Wisenet Security System
(*SDH-C85127BF, SDH-C94087BF, SDH-B94047BF, SNK-B73047BW*)
- Wisenet Life Cloud account
- Google Chromecast, Chromecast Ultra, or a TV with Chromecast built-in
- A Google Home Assistance device (*Google Home Max, Google Home, Google Home Mini*) or a device with the Google Assistant App installed

Let's Get Started!


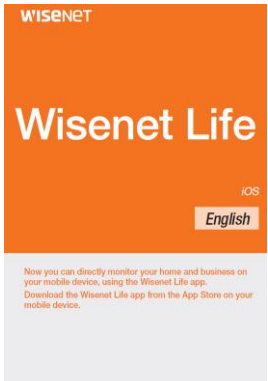
Step 1. Set up your Wisenet Video Security System

Install the Wisenet Video Security System according the user manual's instructions

- [SDH-B94047BF](#), [SDH-C94087BF](#), [SDH-C85127BF](#), [SNK-B73047BW](#)

Step 2. Creating a Wisenet Cloud Account

Download the Wisenet Life app on your iOS or Android device. Create an account by follow the instructions below.

Android	iOS
	

Step 3. Set up your Chromecast, Google Home, or Google Assistant

If you haven't set up Chromecast and Google Home, follow the steps below. If you don't have a Google Home device, you can download the Google Assistant app to your smartphone or tablet. Please note, you would need a Google account before you can set up. If you don't have one, [create an account](#) first.

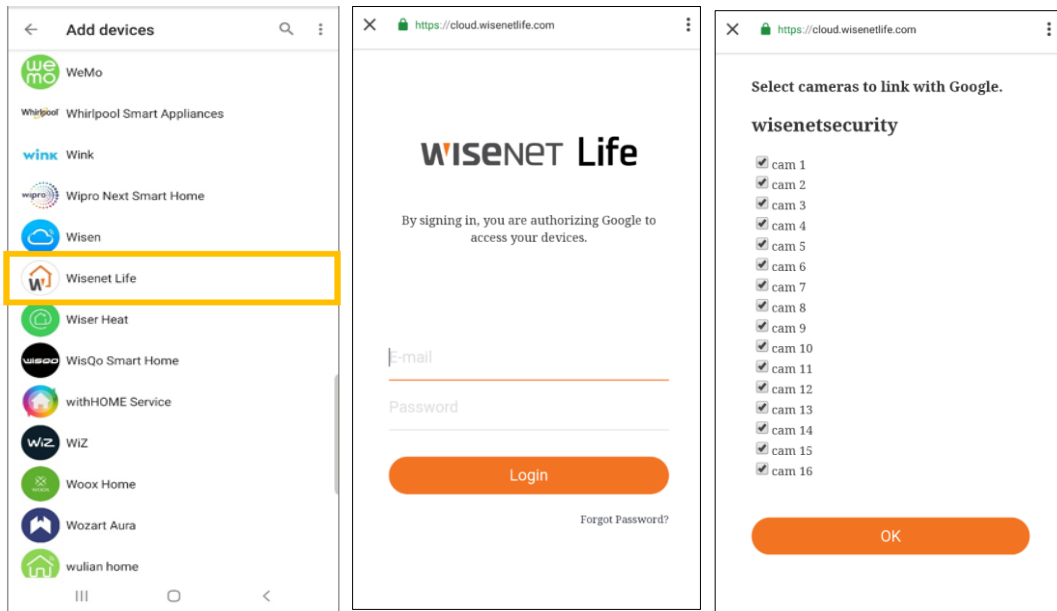
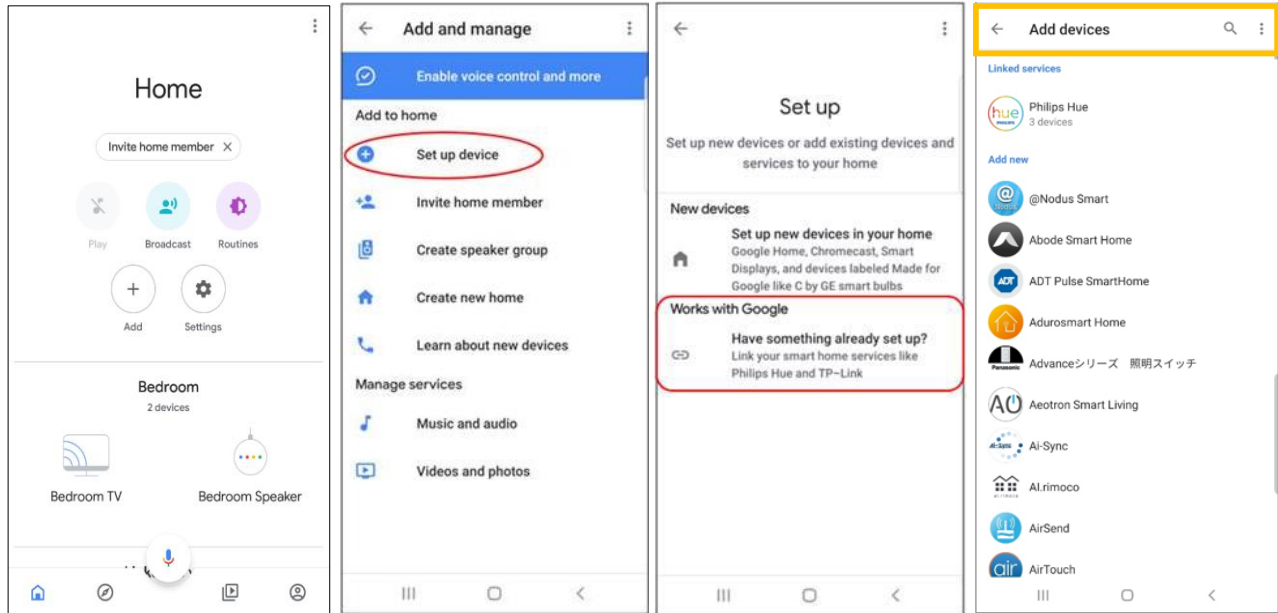
- [Chromecast](#)
- [Google Home](#)
- [Google Assistant](#)

Step 4. Link your TV to Google Home

1. Open the Google Home app.
2. Make sure your Chromecast or TV with Chromecast built-in is using the same Wi-Fi network as Google Home.
3. If you don't see your TV under **Other Cast devices**, tap **Add "+"**. If the name of your TV is shown, your TV is linked.
4. Tap **Set up device**
5. Tap **Set up new devices to your home**
6. Tap on the home you want to use and it will search for available devices
7. Tap on the device you want to pair and then **Done**.

Step 5. Link your Wisenet Video Security System on Google Home

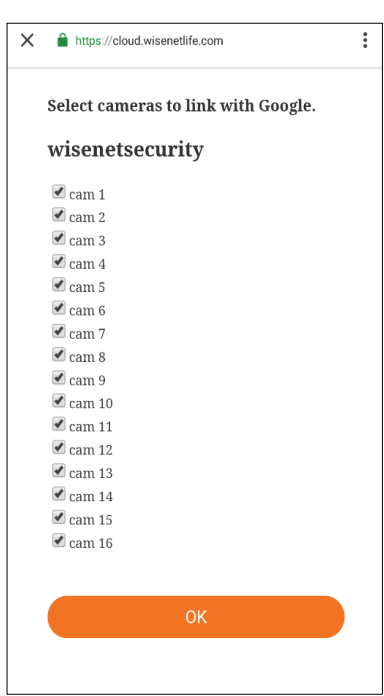
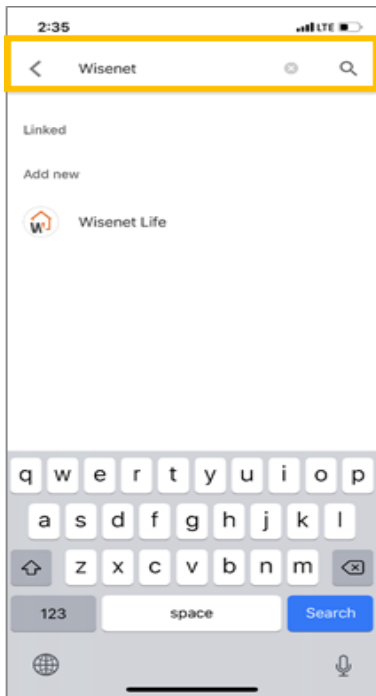
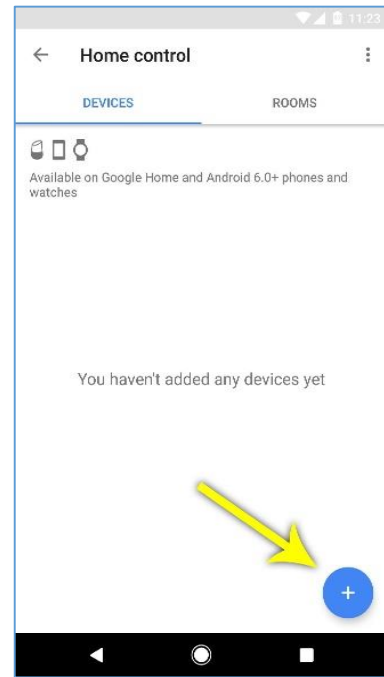
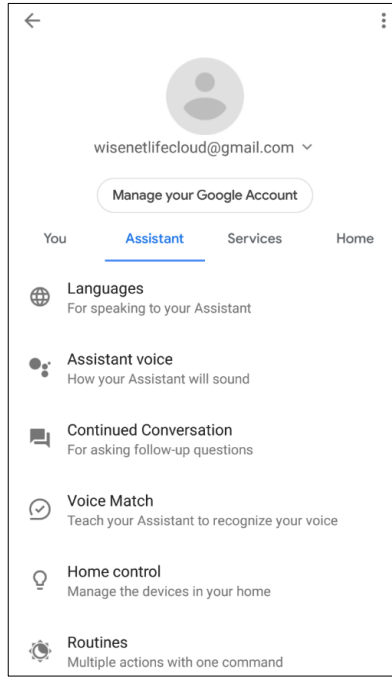
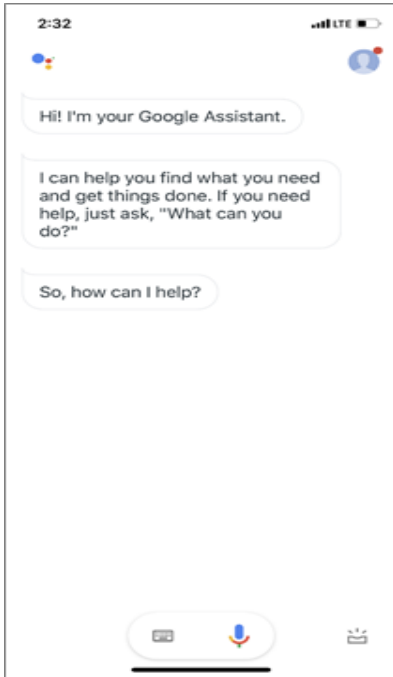
1. Open the Google Home app.
2. Make sure you are using the same Wi-Fi network for the video security system and Google Home
3. Tap **Add "+"**
4. Tap **Set up new device**
5. Tap on the second option, **Works with Google – Have something already set up?**
6. Tap on the magnifying glass to search for **Wisenet Life**
7. Tap on **Wisenet Life**
8. Sign into your Wisenet Life account
9. Select the cameras you want to link with Google Home and tap **OK**



Using Google Assistant app instead of Google Home

1. Open the Google Assistant app
2. Tap on the Explore icon
3. Tap on your profile icon located on the top right corner
4. Tap **Settings**
5. Tap **Assistant**

6. Tap **Home Control**
7. Tap **Add “+”** icon
8. Tap on the magnifying glass to search for **Wisenet Life**
9. Tap on **Wisenet Life**
10. Sign into your Wisenet Life account
11. Select the cameras you want to link with Google Home and tap **OK**



Step 6. Stream your cameras to the TV using voice commands

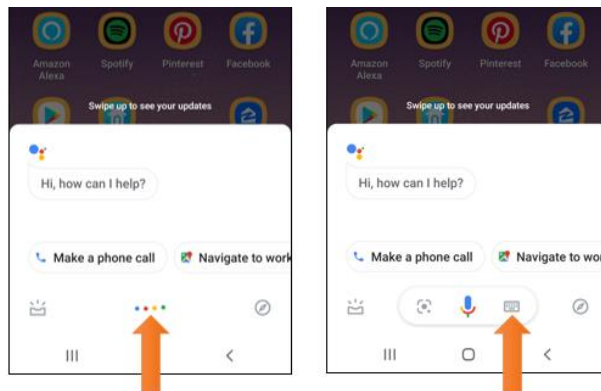
To initiate Google Assistant, say “Ok Google” or “Hey Google”, then say one of the following commands:

- “Show [camera name]”
- “What’s on [camera name]?”
- “[Camera name] on [Chromecast device name]”
- “Play [camera name] on [Chromecast device name]”
- “Show [camera name] on [Chromecast device name]”

To stop the stream, say “Ok Google” or “Hey Google”, then “Stop [Chromecast device name]”

You can also stream your cameras without voice commands.

1. Open the Google Assistant app
2. Tap on the 4 colorful dots or wait until it displays three icons
3. Tap on the keyboard icon
4. Type in one of the commands from above



- End of document