

SmartCam

Android

English

Now you can monitor critical events with your mobile devices through the SmartCam application.

Download the application from Play Store and install on your mobile device.

❖ Search keywords for the application: "Samsung SmartCam", "Smartcam", "Samsung techwin", "Techwin".

1. Requirements for mobile devices

Hardware / Operating System	Requirements
OS	- Android 4.4/5.0
CPU	- 1GHz or higher
RAM	- 128MB or more (recommended), RAM : 50MB (Minimum)
Network	- Must support Wi-Fi or 3G/LTE mobile communication
Video Codec	- H.264
Recommended mobile devices	- Galaxy S4/S5/Note 4
Recommended Tablet PC	- Galaxy Note 10.1

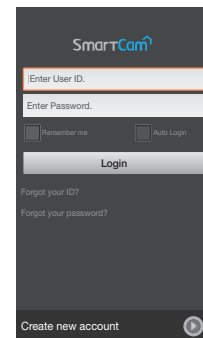
- !** ■ If you use 3G or 4G(LTE) data communication, excessive amount of fees can be billed and may cause data delays or loss. Wi-Fi is recommended.

2. Subscription

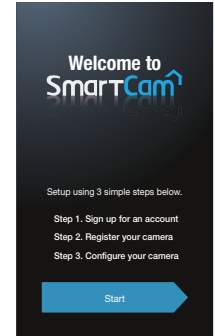
1. Run the downloaded application.



2. Tap <Create new account>.



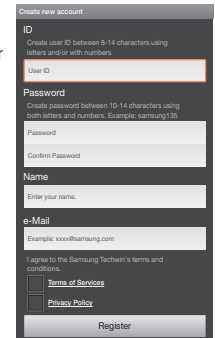
3. Tap <Start>.



4. Enter requested information.

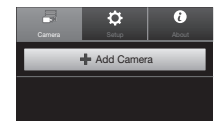
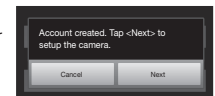
- !** ■ Email address is used to search for account ID and password.

5. Read the terms and conditions, and tap <Register>.



6. Tap <Next> when the menu on the completion of a new member registration pops up.

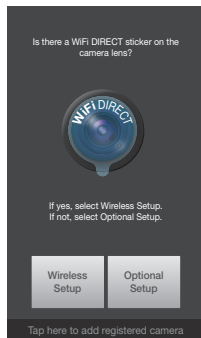
- !** ■ Tap <Add Camera> after logging in if you are already a member.



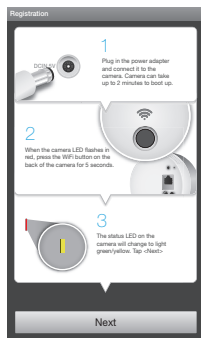
Wi-Fi Direct connection

- You can only use it in a camera that has a Wi-Fi Direct sticker attached to it.
- Press the button, "Tap here to add registered camera" when you register a camera being used in another account, in order to register it immediately without setting it.

7. Tap <Wireless Setup>.

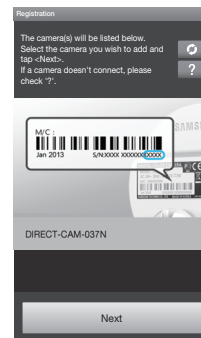


8. Tap <Next> after connecting a camera according to the instructions displayed on the screen.



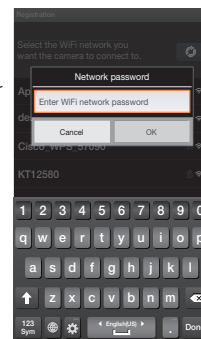
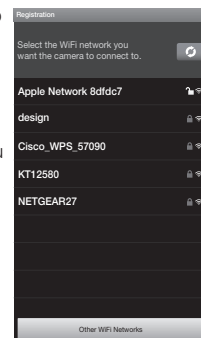
9. After selecting a camera to connect, tap <Next>.

- Select a camera that has the last four digits of the serial number on the back of the product.



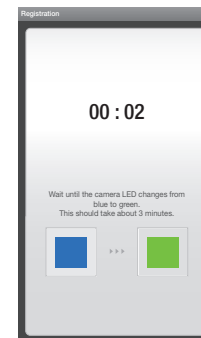
10. Select a WiFi router connected to your camera.

- : After entering the password, connect to a WiFi router.
- : Without the password, you will not be connected to a WiFi router.
- Other WiFi Networks : Enter the SSID name, security type and password. If selected, it shows guide on SSID and networking procedures.
- Network password : If you select a WiFi router with the password, then the pop up window will prompt you to enter the password.



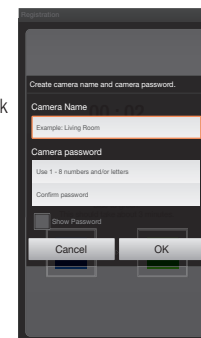
11. The LED of the camera will turn into green if a camera is connected to Wi-Fi.

- Camera's LED will blink in blue while searching for a WiFi router. If a connection is made to the WiFi router, the LED will be blue consistently. After a short while, while the camera is connecting to the server, the LED will turn green.



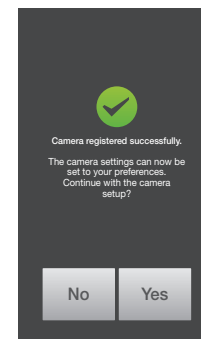
12. Enter <Camera Name> and <Camera password> and then click <OK>.

- Click <Show Password> to check your password.



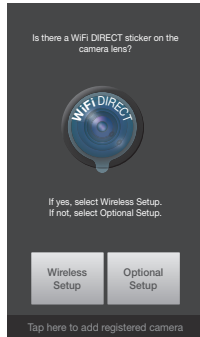
13. The camera registration is completed. Select <Yes> for a camera setting. Select <No> to view a live screen.

- If you failed to register wirelessly, please try again over a wireline.
- Cameras may not be registered depending on the settings of the mobile device. In this case, contact the service center.

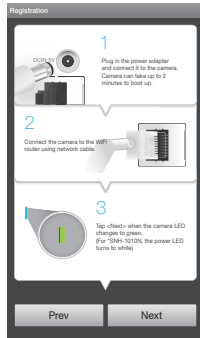


Cable connection

7. Tap <Optional Setup>.

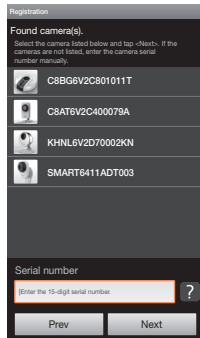


8. Tap <Next> after connecting a camera according to the instructions displayed on the screen.



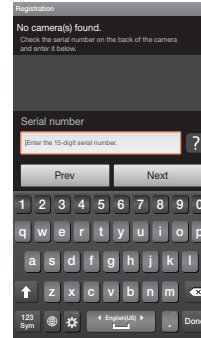
9. Select the camera found and tap <Next>.

- When your smartphone is connected to the same Wi-Fi network as the camera, it will automatically search for the camera.
- Cameras already registered are not searched.



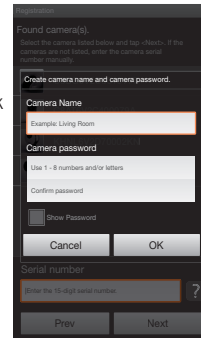
10. If the camera is not detected, please enter the camera serial number manually.

- For camera's serial number location, refer to [?].



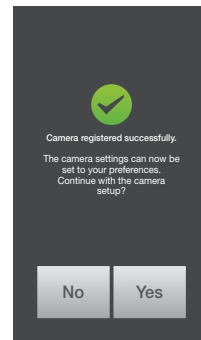
11. Enter <Camera Name> and <Camera password> and then click <OK>.

- Click <Show Password> to check your password.



12. The camera registration is completed. Select <Yes> for a camera setting. Select <No> to view a live screen.

- Cameras may not be registered depending on the settings of the mobile device. In this case, contact the service center.

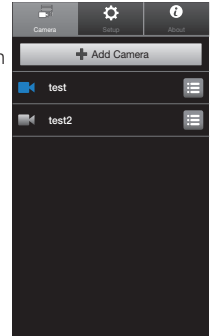


3. Camera List

Camera Move

1. Move to the <Camera> item. From the listed active cameras, tap the desired camera's [?] on the right.

- You cannot monitor an inactive camera.
- For a Wi-Fi Direct camera, you can set the wireless network by selecting an inactive camera.



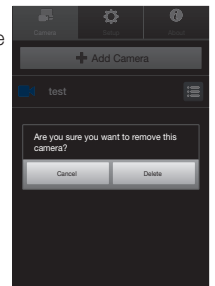
2. Live, Event, Playback and Setup icons will be displayed.

- The supported functions may be different depending on the model.



Delete Camera

1. To delete an added camera, tap and hold the desired one from the camera list, and tap <Delete>.



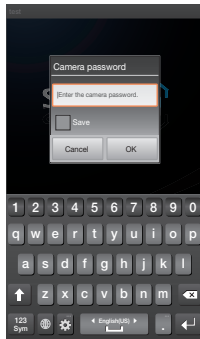
4. Live Video

1. Tap the desired camera's [📷] or tap the <Live> icon.

- If there is the latest version of firmware, when you make a live video connection, a pop up will appear so that you can update your camera's firmware.

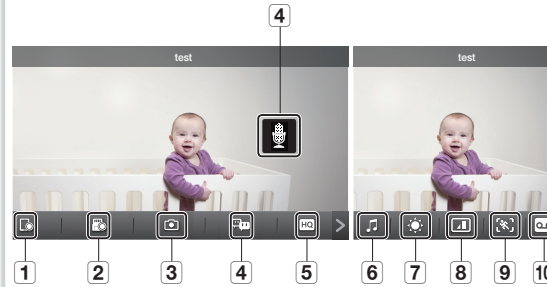


2. Enter the <Camera password> for the camera selected. This is the same camera password you created at the time you registered the camera. Check the <Save> option to save the camera password. Within 20 seconds, it will start streaming.



- According to the network service provider's policy, or the network connection status, it may take a while to load.

Live Video

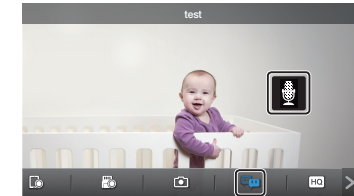


No.	Description
1	Phone recording The user can save the video in <Manage saved video clips.> in Settings.
2	SD Save A user can manually save the video in the SD card. ■ If there is storage space of 10% while the SD card overwrite function is not activated, you cannot perform manual recording.
3	Capture You can capture and save a still image from the video.
4	Two-way Audio The microphone for two-way audio between cameras and mobile devices is activated. ■ Refer to the bidirectional audio function.
5	HQ In general network environments, high quality video is provided. ■ Depending on the network status or service provider's policy, HQ video may not be provided. In this case, video is displayed for seven minutes. ■ In relay mode, no HQ video is provided. For more details, refer to "Relay Mode".
6	Melody The selected melody will be heard through the camera speaker.
7	Brightness control Adjusts the screen brightness.
8	Flip control Flips the video image.

No.	Description
9	Motion zone It detects motion within the area set by the user. ■ Refer to the motion zone functions.
10	Audio playing A user can record audio and play the recorded audio through the camera speaker. ■ You can record a max of 10 audio files.
	IR Lighting If you select <Night Vision> in general settings, IR lighting will operate for two minutes.

- The supported functions may be different depending on the model.

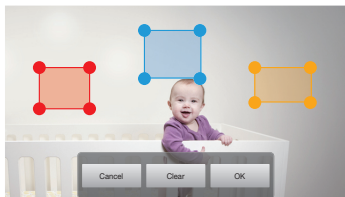
Two-way Audio



1. Tap on the Two-way Audio icon.
2. The Mic icon will appear.
3. Talk while pressing down the mic icon. The voice can be heard from the speaker on the camera. After finishing talking, press down the icon for two seconds so that the audio information will be transmitted through the network.
4. Even if you did not activate the two-way audio function, you can receive the audio sound of the video. In addition, the microphone setting should be at least 1 or higher if you want to use the two-way audio function.

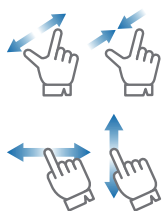
- When there are multiple users logged on to the camera, first person who tap the Talk icon will have the control.
- While the bidirectional audio is on, you need to tap the bidirectional audio icon again to cancel the function.
- In relay mode, there is no audio. For more details, refer to "Relay Mode".

Motion zone



1. Tap the motion zone icon.
2. Connect to the motion zone mode.
3. After touching the video, drag it to set the area.
 - You can set a max of three motion zones.
4. If you want to run the motion zone in the area set, tap <OK>.
 - Motion is detected only in the set area.
 - Motion zone function only operates if motion detection is activated. In <Setup> - <Event>, set motion detection.
5. To delete the set area, press <Clear> and <OK>. If you want to exit the motion zone setting mode, tap <Cancel>.

To control digital zooming




You can also zoom in by pinch open using two fingers on the screen. To zoom out, pinch close on the screen. Touch and hold to drag the screen in any direction to reveal the hidden part of the image if enlarged bigger than the screen.

- Current digital zooming level is noted next to the digital zoom box, and digital zooming supports zooming up to x4.

Relay mode

If the network condition is not good and a connection is unstable, then you can use the relay mode to view video for seven minutes.

When the relay mode connection is made, the [] mark is displayed on the video, and to maintain stable connections, there will be no audio or HQ video.

- ! ■ If the router UPnP setting is not set, then a relay mode connection can be made. Depending on the model of router used, a different setting method is used. Refer to the user manual.
- If a camera is connected to the multiple router, or the wired/wireless network environments for camera and mobile device are unstable, a relay mode connection can be made.
- If you have trouble connection to the camera, visit "http://www.samsungsmartcam.com", go to support page, and refer to "Troubleshooting" on it.

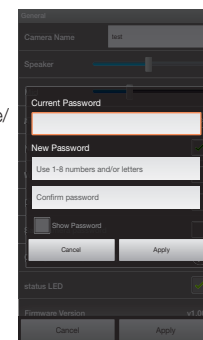
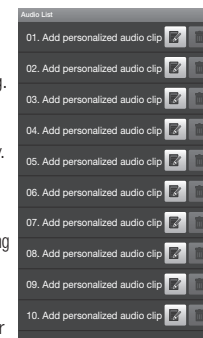
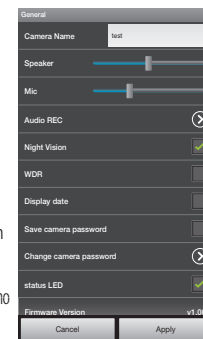
5. Camera Setup

Tap the <Setup> icon to configure a camera to be monitored.



General setting

1. Tap <General>.
2. Configure the basic camera settings.
 - Camera Name : Camera name is used to easily identify the camera when you have more than one.
 - Speaker/Mic : Adjust the volume for the camera's built-in mic or speaker.
 - ✍ ■ If you set the mic to zero, there will be no live sound and no audio event and also there is no recording in the SD card.
 - Audio REC : The voice can be recorded or deleted by users.
 - Night Vision : Set the IR lighting. Check <Night Vision> to set the camera to switch to the night vision mode automatically.
 - ✍ ■ In the case of SNH-1010N, you can check <Night Vision> for a camera to automatically operate the IR lighting for two minutes depending on the brightness of the neighboring areas.
 - WDR : You can compensate for the backlight by making a dark area brighter, and a bright area darker.
 - SNH-P6410BN supported
 - Display date : Displays the date/time on the live video.
 - Save camera password : You will be connected to your camera without having to enter the password.
 - Change camera password : Change the current camera password.



- status LED : You can turn on or off the LED on your camera.
- Firmware Version : You can check the current version and the latest distributed version and even make updates. If there is the latest version of firmware, when you make a live video connection, a pop up will appear so that you can update your camera's firmware.
- Camera default : Initializes all settings of the camera, except for network settings.

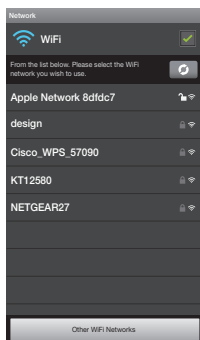
3. Tap <Apply>.

- ! The supported functions may be different depending on the model.

Network setting

1. Tap the <Network>.
2. Configure the wireless network.

- WiFi : Display the list of WiFi router that you can use.

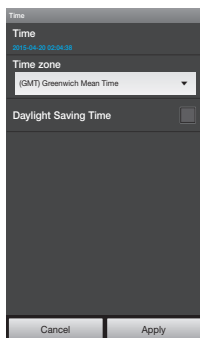


- ✍ If the Wi-Fi receiving sensitivity is poor, receiving a video may not work properly. Move the location of the camera to adjust receiving sensitivity.

Time setting

1. Tap <Time>.
2. Set the camera's clock.

- Time zone : Select your region.
- Daylight Saving Time : Check this option if you live in a country or region where DST (Daylight Saving Time) is applied.



Event setting

1. Tap the <Event>.
2. Set your event items.

- Event alert : Detection of motion/audio or saving of video in the Picasa or Google drive is notified to the user.
- Motion/Audio Detection : Specify whether to trigger the alarm or not, and specify the sensitivity. The higher the sensitivity is, the subtler motion/audio events will be detected.
- Google account setup : You can upload pictures on Picasa through the Google account.

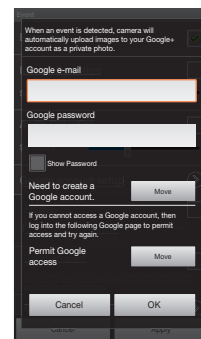
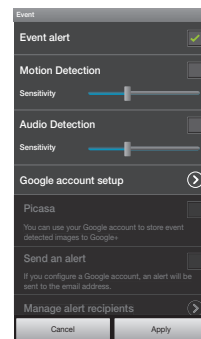
- ✍ If you wish to send an event alarm to the Picasa/Google drive, you must register the Google account first.

- Picasa : Sends event images to the user's Picasa account.
- Send an alert : Sends an alert via email when motion/audio is detected.
- Manage alert recipients : Adds or deletes a recipient who will receive an alert message.
- Google Drive : A 30-second video clip is uploaded automatically to the user's Google Drive account.

- ! If the model does not support the SD card, the video is saved to Google Drive.

3. Tap <Apply>.

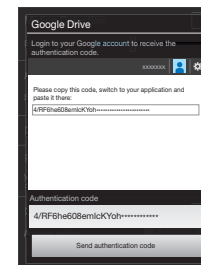
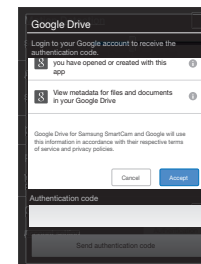
- ! The supported functions may be different depending on the model.



Setting Google Drive

You can set the Google Drive through request for authentication.

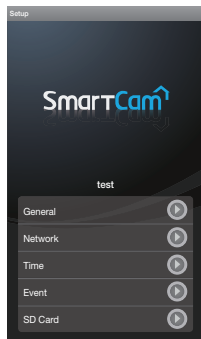
1. Log onto the Google account.
2. Tap <Accept>. An authentication code is created.
3. Tap <Send authentication code>. Google Drive setting is completed.



SD card setting

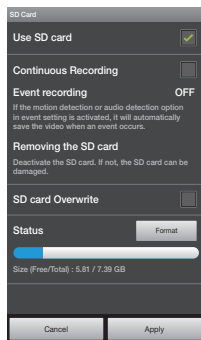
- It is applicable to a model that supports SD cards.
- You need to purchase an SD card if you want to use it.
- Note that inserting an SD card which has been used for other purposes into the camera may delete the data.
- Before removing the SD card, deactivate the Use SD card setting. If not, the SD card can get damaged.

1. Tap <SD Card>.



2. Set the SD card item.

- Use SD card : When you set motion/audio, the video will be automatically saved in the SD card.
- Continuous Recording : Video is saved regardless of the event that occurs.
- SD card Overwrite : If the SD card capacity is insufficient, then it will automatically start overwriting the oldest data.
- Status : Check the remaining capacity of the SD card.
- Format : Delete all the data in the SD card.



3. Tap <Apply>.

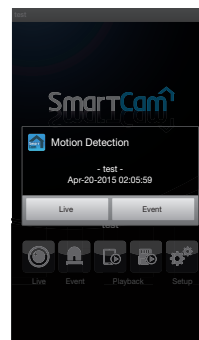
6. Event List

1. Tap the <Event> icon, and the Google Drive and the Picasa event link are displayed.

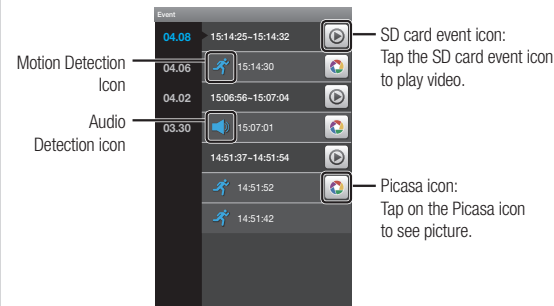
- Events are listed only when you have registered the Google account and set the Google Drive/Picasa.



- You will get a notification prompt when event is detected by the camera.
- While uploading files in Google Drive or Picasa, no event is detected.
- When an event is detected, an alarm is received and when image or video uploading is finished, then one more alarm is received.



2. Events detected are saved on the server and are displayed in the event list in order of their occurrence.

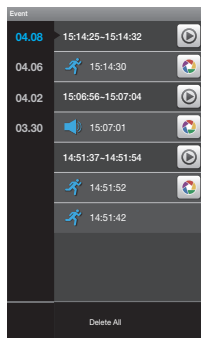


- If the model does not support the SD card, you can view the video by tapping the Google Drive icon.
- If you select the Google Drive icon/Picasa icon, the linked web page is displayed.
- You can watch the video only when the Google Drive account is the same with the one used in the camera.
- If you download a file, you can play the video on a video player. But, if the video player has no codec installed to support the video, the video won't be played smoothly so please install the codec that supports H.264 and G.711 first.

Deleting All Events

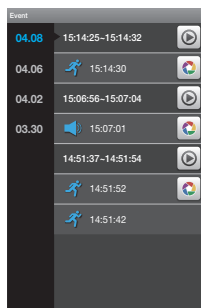
1. If you tap the Menu button of the mobile device, the <Delete All> dialog pops up.
2. Tap on the <Delete All> to clear the all event.

- When deleting all, SD card events will not be deleted.

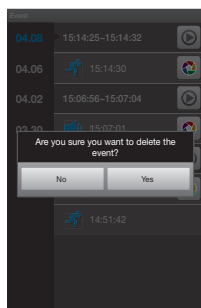


Deleting Each Event

1. Tap and hold the desired event to be deleted.



2. Tap on <Yes> to delete the event.



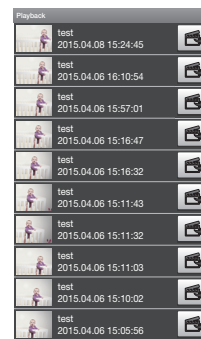
7. Playback

Phone Recording

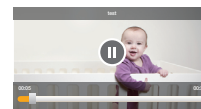
1. Tap the < [SD] > icon.
 - It is applicable to a model that supports SD cards.



2. The list of manually recorded videos saved in the SmartCam app is displayed.



3. Tap the video you want to play, and then the video that has been selected will be played.
 - [Play/Pause] : You can play or pause the video.
 - [Progress Bar] : Drag the time bar and play the video at the desired time.
4. You can save recorded videos in the SmartCam folder of the mobile terminal by tapping the < [SD] > icon.



SD Save

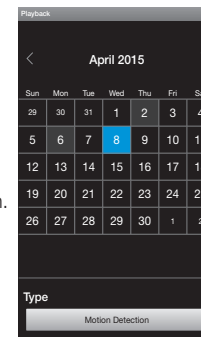
- ! ■ Continuous recording automatically saves video to SD memory every five minutes.
- You can manually record the live screen using the Save to SD button. If you switch to another screen without turning it off, video will be saved for additional 30 seconds before stopping.
- Event recording saves motion or audio for thirty seconds and if motion or audio is detected again in the meantime, the amount of saving time is extended.
- If an SD/Event recording occurs in the middle of the continuous recording, the entire SD/Event recording footage may be split into separate files with a maximum duration of 5 minutes.

SD Playback

1. Tap the < [SD] > icon.
 - ! ■ This model supports SD cards.



2. Searchable dates are displayed on the calendar. Tap the left/right < [Left/Right] > button to select between year/month in the top of the calendar to move to the previous or next month.
3. Select the desired date of search.
4. Select an event type that you want to search.
 - You can select a saved video type in the playing list.



5. On the screen, a circular shaped timeline (24 hours) will be displayed. The time zone with the search data is classified by colors.

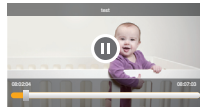


6. Check the timeline and drag it to the desired playing time [●] to set the video playing start time or enter the time on your own.

- Previous/Next video : Move to the previous/next video to the selected video.

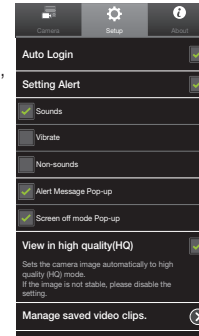
7. Tap the <▶> button. Play the video data.

- ⏪/⏩ : You can play or pause the video.
- ⏮/⏭ : Drag the time bar and play the video at the desired time.



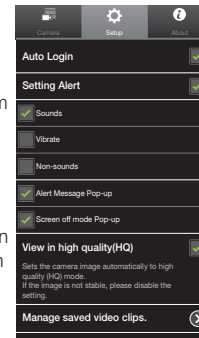
8. Auto Login Setup

1. Move to the <Setup> item.
2. If you check <Auto Login> and run the app when it is terminated, you will be automatically logged in.



9. Alarm setting

1. Move to the <Setup> item.
2. Set the alarm for an event.
 - Sounds/Vibrate/Non-sounds : When an event occurs, an alarm will be displayed as it was set.
 - Alert Message Pop-up : When an event occurs, a notification pop up will appear.
 - Screen off mode Pop-up : When an event occurs with the screen turned off, a notification pop up will appear.



10. Other Settings

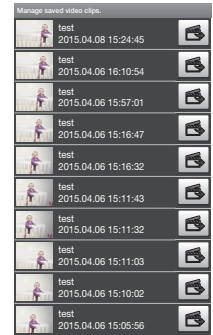
Move to the <Setup> item.

View in high quality(HQ)

Sets the camera image automatically to high quality (HQ) mode.

Manage saved video clips.

You can download files saved in the SmartCam app to a mobile terminal or delete them.



11. Info.

Checking the S/W info

1. Move to the <About> item.
2. You can check the information of the currently installed software.

Help guides

1. Move to the <About> item.
2. Tap the <Help Guide> menu to see help.

- The language set in the mobile device is automatically recognized, and the app is provided in that language. Help is available in seven different languages.

